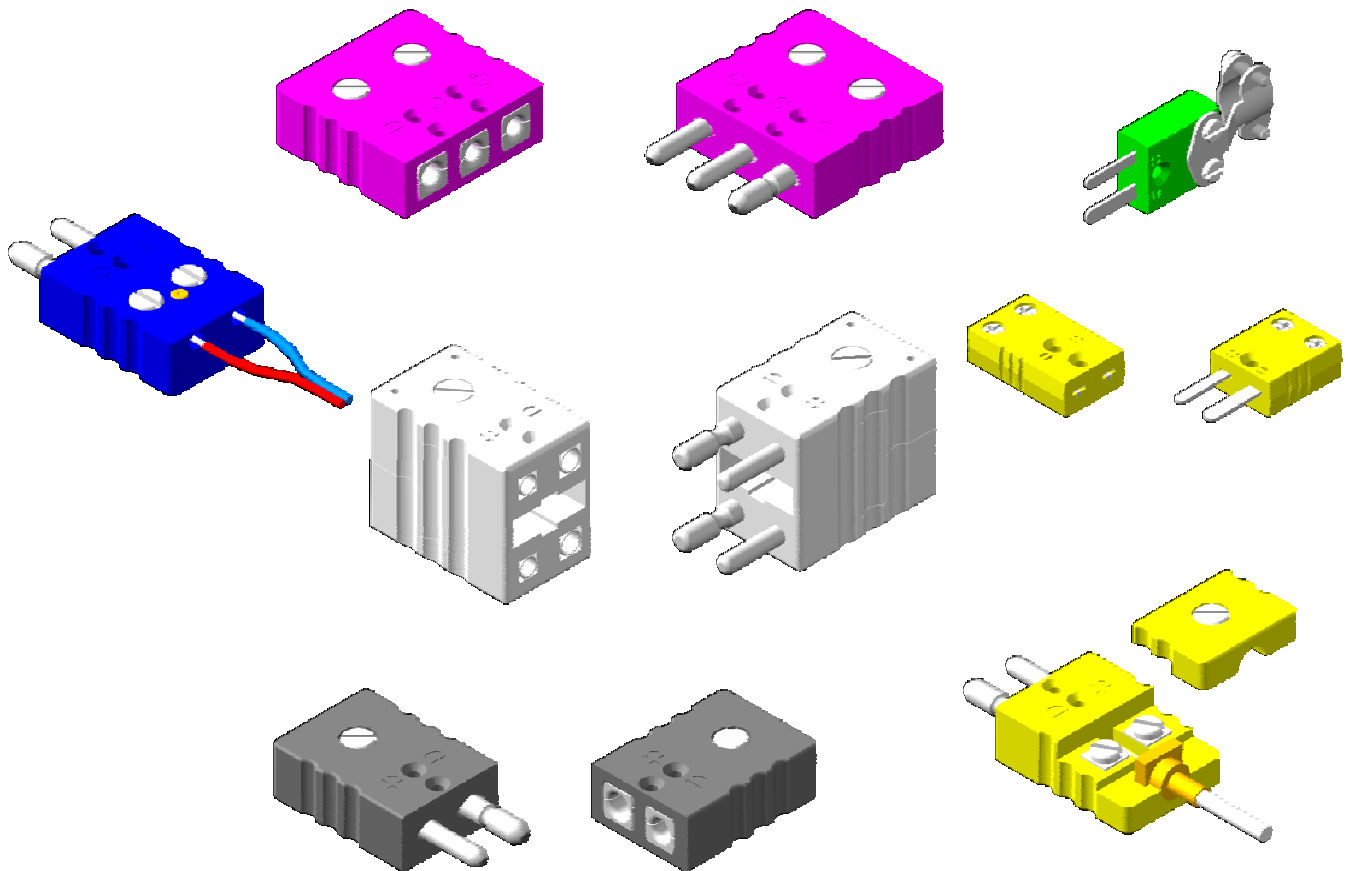




THERMO ELECTRIC

CONNECTORS

Section CONN



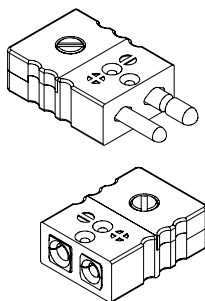
Quick coupling plugs and jacks for thermocouple circuits were introduced first by Thermo Electric Co., Inc. over 60 years ago. Solid thermocouple pin material and instant self-locking polarized connections gained quick acceptance in industrial and laboratory facilities throughout the nation. Connectors may be mounted to thermocouple wires or directly on the thermocouple itself to save time when checking or replacing thermocouples, or when changing instrumentation from one input to another. In the following pages of this catalog you will find a connector designed for your application.

Thermo Electric products offer the following advantages:
Quick-coupling with captive pins and receptacle for secure connections.
A selection of materials and designs for up to 1200°F service.
Rugged solid thermocouple alloy pin connectors available.
Designed for easy use and installation.
Connectors are ISA or IEC color-coded.
Available from stock at all manufacturing locations.

CONNECTORS

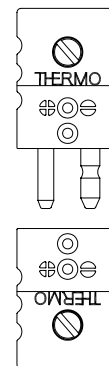
STANDARD 2-PIN Document No. TE-010109-CONN-010

ORDERING CODE			CALIBRATION
PLUG	PLUG(SOLID PINS)	JACK	
CO-45101	CO-45101HD	CO-45201	ISA TYPE J
CO-45102	CO-45102HD	CO-45202	ISA TYPE K
CO-45103	CO-45103HD	CO-45203	ISA TYPE T
CO-45104	CO-45104HD	CO-45204	ISA TYPE R/S*
CO-45105	CO-45105HD	CO-45205	ISA TYPE E
CO-45106	CO-45106HD	CO-45206	COPPER**
(USE HD)	CO-45107HD	CO-45207	ISA TYPE N



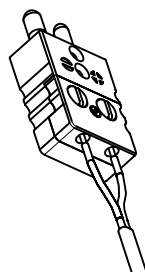
EXTENDED TEMPERATURE LIMITS 2-PIN Document No. TE-CO010109-CONN-020

ORDERING CODE			CALIBRATION
PLUG	PLUG(SOLID PINS)	JACK	
CO-40301	CO-40301HD	CO-40401	ISA TYPE J
CO-40302	CO-40302HD	CO-40402	ISA TYPE K
CO-40303	CO-40303HD	CO-40403	ISA TYPE T
CO-40304	CO-40304HD	CO-40404	ISA TYPE R/S*
CO-40305	CO-40305HD	CO-40405	ISA TYPE E
CO-40306	CO-40306HD	CO-40406	COPPER**
(USE HD)	CO-40307HD	CO-40407	ISA TYPE N



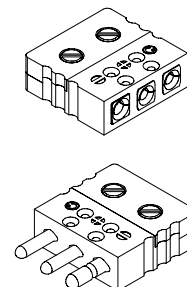
QUICK WIRE 2-PIN Document No. TE-CO010109-CONN-030

ORDERING CODE			CALIBRATION
PLUG	PLUG(SOLID PINS)	JACK	
CO-45111	CO-45111HD	CO-45211	ISA TYPE J
CO-45112	CO-45112HD	CO-45212	ISA TYPE K
CO-45113	CO-45113HD	CO-45213	ISA TYPE T
CO-45114	CO-45114HD	CO-45214	ISA TYPE R/S*
CO-45115	CO-45115HD	CO-45215	ISA TYPE E
CO-45116	CO-45116HD	CO-45216	COPPER**
(USE HD)	CO-45117HD	CO-45217	ISA TYPE N



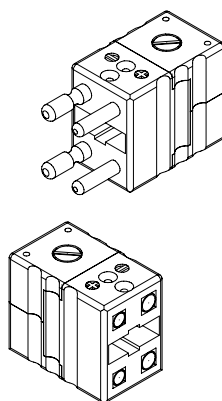
STANDARD SIZE 3-PIN Document No. TE-CO010109-CONN-040

ORDERING CODE			CALIBRATION
PLUG	PLUG(SOLID PINS)	JACK	
CO-46101	CO-46101HD	CO-46201	ISA TYPE J
CO-46102	CO-46102HD	CO-46202	ISA TYPE K
CO-46103	CO-46103HD	CO-46203	ISA TYPE T
CO-46104	CO-46104HD	CO-46204	ISA TYPE R/S*
CO-46105	CO-46105HD	CO-46205	ISA TYPE E
CO-46106	CO-46106HD	CO-46206	COPPER**
(USE HD)	CO-46107HD	CO-46207	ISA TYPE N



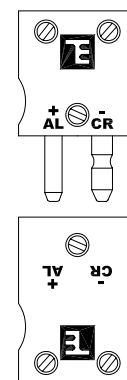
DUPLEX 2-PIN (4 TOTAL) Document No. TE-CO010109-CONN-050

ORDERING CODE		CALIBRATION
PLUG	JACK	
CO-40801	CO-40901	ISA TYPE J
CO-40802	CO-40902	ISA TYPE K
CO-40803	CO-40903	ISA TYPE T
CO-40804	CO-40904	ISA TYPE R/S*
CO-40805	CO-40905	ISA TYPE E
CO-40806	CO-40906	COPPER**
CO-40807	CO-40907HD	ISA TYPE N



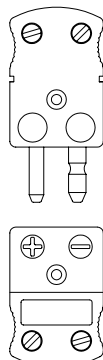
PHENOLIC, 2-PIN Document No. TE-CO010109-CONN-060

ORDERING CODE		CALIBRATION
PLUG	JACK	
CO-42131	CO-42231	ISA TYPE J
CO-42132	CO-42232	ISA TYPE K
CO-42133	CO-42233	ISA TYPE T
CO-42134	CO-42234	ISA TYPE R/S*
CO-42136	CO-42136	ISA TYPE E
CO-42137	CO-42237	COPPER**
(NOT AVAILABLE)		ISA TYPE N



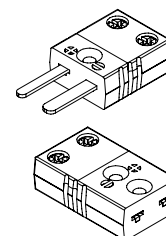
ULTRA TEMP 2-PIN Document No. TE-CO010109-CONN-070

ORDERING CODE		CALIBRATION
PLUG	JACK	
CO-43101	CO-43201	ISA TYPE J
CO-43102	CO-43202	ISA TYPE K
CO-43103	CO-43203	ISA TYPE T
CO-43104	CO-43204	ISA TYPE R/S*
CO-43105	CO-43205	ISA TYPE E
CO-43106	CO-43206	COPPER**
CO-43107	CO-43207	ISA TYPE N



MINIATURE 2-PIN Document No. TE-CO010109-CONN-080

ORDERING CODE		CALIBRATION
PLUG	JACK	
CO-41101	CO-41201	ISA TYPE J
CO-41102	CO-41202	ISA TYPE K
CO-41103	CO-41203	ISA TYPE T
CO-41104	CO-41204	ISA TYPE R/S*
CO-41105	CO-41205	ISA TYPE E
CO-41106	CO-41206	COPPER**
CO-41107	CO-41207	ISA TYPE N



* Compensating Extension Alloys used for both R and S thermocouples
** Copper used for B thermocouples or RTD's



TEMPERATURE MEASUREMENT DESIGNER'S GUIDE
WWW.THERMO-ELECTRIC-DIRECT.COM

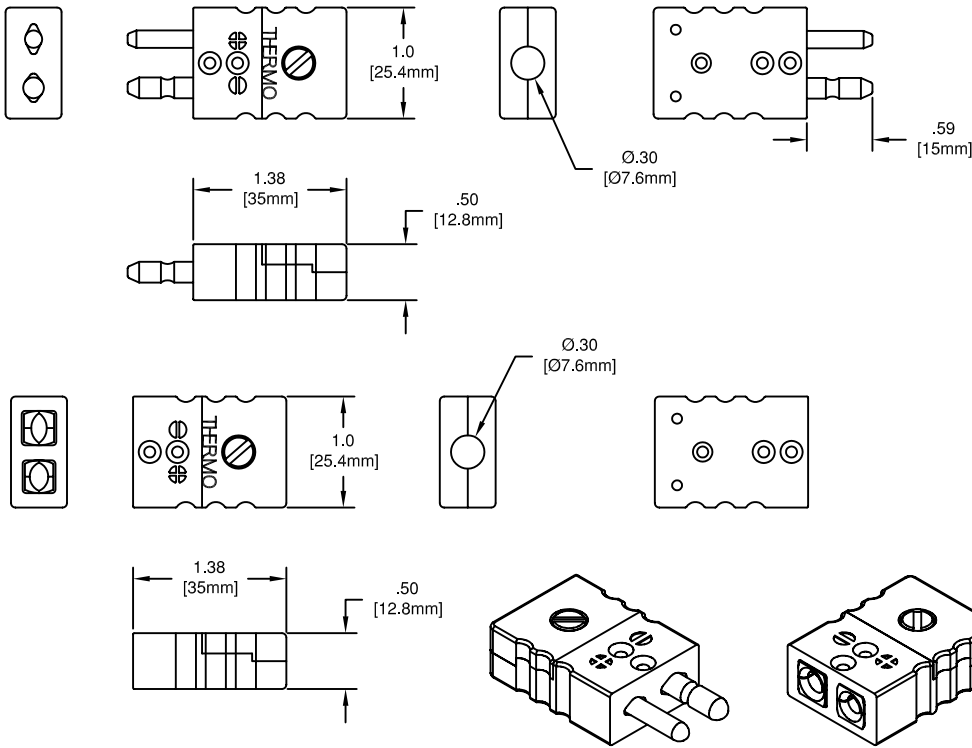
SECTION CONN

INTRODUCTION

The information contained hereon shall be considered the sole property of Thermo Electric Company, Inc. The recipient thereof agrees not to disclose or reproduce said information to parties outside the recipient's organization without the written permission of Thermo Electric.

Doc. No.: TE-CO010109-CONN-INT

CONNECTORS



STANDARD CONNECTORS

Standard polarized quick-coupling plugs and jacks for thermocouple circuits were introduced first by Thermo Electric over sixty years ago. Like their predecessors, today's connectors can be installed at any point in a thermocouple circuit where quick wire to wire or thermocouple to wire disconnection are required. These connectors feature color codes to ISA or IEC standards, polarity marks molded into the connector bodies, and are polarized to prevent mismatching. Plugs are available in standard pin or rugged solid pin construction.

SPECIFICATIONS

CONNECTORS

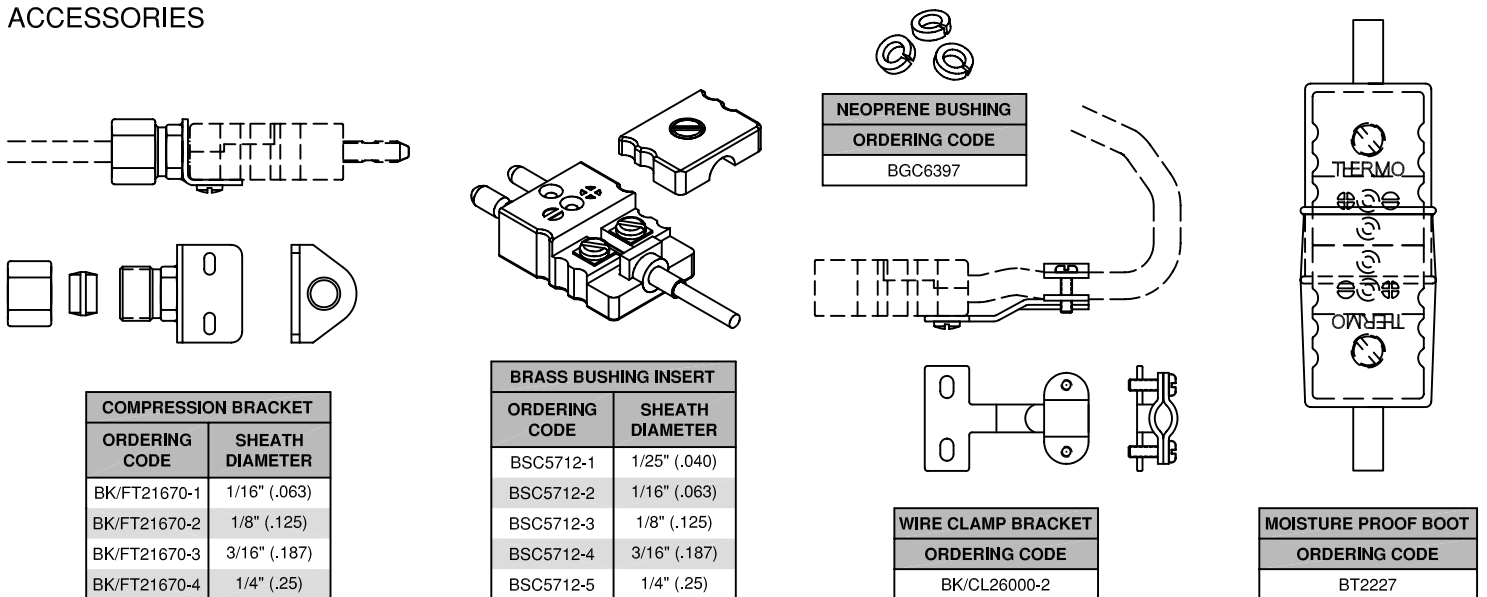
Color Identification: ANSI-MC96 or IEC
Pin & Insert Material: Thermocouple Alloys
Body Material: High Impact Strength Thermoplastic
Polarized Pins
Spring Loaded Inserts
Single Captive Cover Screw
Maximum Temperature Limit: 390°F (200°C)
Maximum Wire Diameter: .079" (14Ga)

ACCESSORIES

Compression Brackets: Stainless Steel, Brass insert, Includes Mounting Screws
Brass Bushing Inserts: Crimp or Solder
Wire Clamp Brackets: Stainless Steel, Includes Mounting Screws
Split Neoprene Bushings
Moisture Proof Boots: Neoprene Rubber

ORDERING CODE (ANSI)				ORDERING CODE (IEC)				CALIBRATION		SYMBOL
PLUG	PLUG (SOLID PINS)	JACK	BODY COLOR	PLUG	PLUG (SOLID PINS)	JACK	BODY COLOR	POSITIVE (+)	NEGATIVE (-)	
CO-45101	CO-45101HD	CO-45201	BLACK	CO-45101-IEC	CO-45101HD-IEC	CO-45201-IEC	BLACK	IRON	CONSTANTAN	JX
CO-45102	CO-45102HD	CO-45202	YELLOW	CO-45102-IEC	CO-45102HD-IEC	CO-45202-IEC	GREEN	CHROMEL	ALUMEL	KX
CO-45103	CO-45103HD	CO-45203	BLUE	CO-45103-IEC	CO-45103HD-IEC	CO-45203-IEC	BROWN	COPPER	CONSTANTAN	TX
CO-45104	CO-45104HD	CO-45204	GREEN	CO-45104-IEC	CO-45104HD-IEC	CO-45204-IEC	ORANGE	COPPER	ALLOY 11	SX/RX
CO-45105	CO-45105HD	CO-45205	PURPLE	CO-45105-IEC	CO-45105HD-IEC	CO-45205-IEC	VIOLET	CHROMEL	CONSTANTAN	EX
CO-45106	CO-45106HD	CO-45206	WHITE	CO-45106-IEC	CO-45106HD-IEC	CO-45206-IEC	WHITE	COPPER	COPPER	BX
(USE HD)	CO-45107HD	CO-45207	ORANGE	(USE HD)	CO-45107HD-IEC	CO-45207-IEC	PINK	NICROSIL	NISIL	NX

ACCESSORIES



COMPRESSION BRACKET	
ORDERING CODE	SHEATH DIAMETER
BK/FT21670-1	1/16" (.063)
BK/FT21670-2	1/8" (.125)
BK/FT21670-3	3/16" (.187)
BK/FT21670-4	1/4" (.25)

BRASS BUSHING INSERT	
ORDERING CODE	SHEATH DIAMETER
BSC5712-1	1/25" (.040)
BSC5712-2	1/16" (.063)
BSC5712-3	1/8" (.125)
BSC5712-4	3/16" (.187)
BSC5712-5	1/4" (.25)

WIRE CLAMP BRACKET	
ORDERING CODE	
BK/CL26000-2	

MOISTURE PROOF BOOT	
ORDERING CODE	
BT2227	



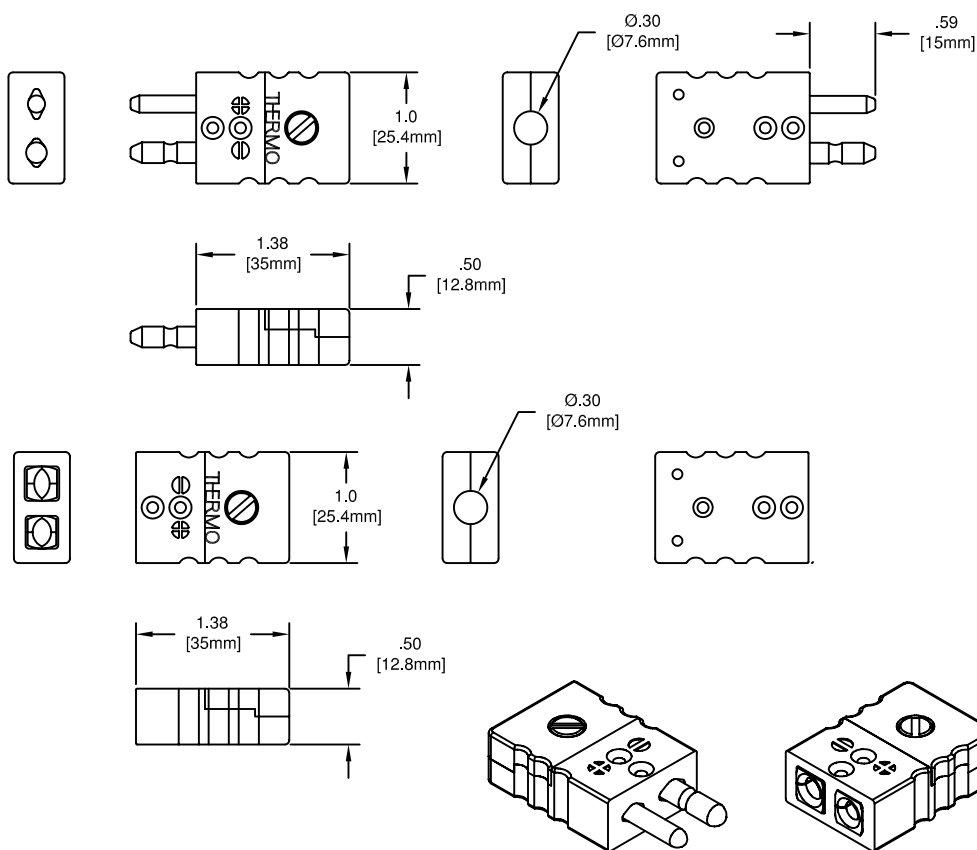
TEMPERATURE MEASUREMENT DESIGNER'S GUIDE
WWW.THERMO-ELECTRIC-DIRECT.COM

SECTION CONN QUICK-COUPLING STANDARD SIZE, 2-PIN

The information contained hereon shall be considered the sole property of Thermo Electric Company, Inc. The recipient thereof agrees not to disclose or reproduce said information to parties outside the recipient's organization without the written permission of Thermo Electric.

Doc. No.: TE-CO010109-CONN-010

CONNECTORS



EXTENDED TEMPERATURE LIMITS CONNECTORS

Manufactured from a fiberglass reinforced thermosetting plastic material. The extended temperature range thermocouple connector is capable of 660 degrees F (350 degrees C) maximum service. Utilization of the same design as Thermo Electric's standard quick-coupling connectors allows acceptance of all available accessories as well as interchange ability with existing equipment, while extending the useful temperature range by over 200 degrees F. Plugs are available in standard pin or rugged solid pin construction.

SPECIFICATIONS

CONNECTORS

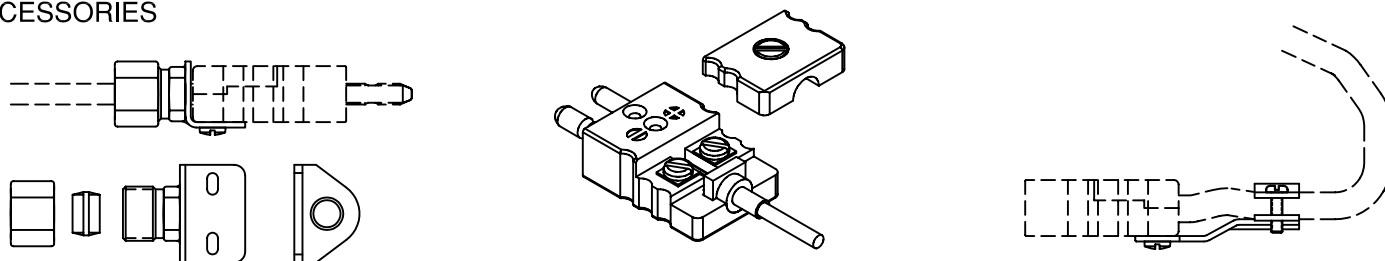
Color Dot Identification: ANSI-MC96
Pin & Insert Material: Thermocouple Alloys
Body Material: Glass Filled Thermoset, Brown
Polarized Pins
Spring Loaded Inserts
Single Captive Cover Screw
Maximum Temperature Limit: 660°F (350°C)
Maximum Wire Diameter: .079" (14Ga)

ACCESSORIES

Compression Brackets: Stainless Steel, Brass insert, Includes Mounting Screws
Brass Bushing Inserts: Crimp or Solder
Wire Clamp Brackets: Stainless Steel, Includes Mounting Screws

ORDERING CODE (ANSI)				ORDERING CODE (IEC)				CALIBRATION		SYMBOL
PLUG	PLUG (SOLID PINS)	JACK	BODY COLOR	PLUG	PLUG (SOLID PINS)	JACK	DOT COLOR	POSITIVE (+)	NEGATIVE (-)	
CO-40301	CO-40301HD	CO-40401	BLACK	CO-40301-IEC	CO-40301HD-IEC	CO-40401-IEC	BLACK	IRON	CONSTANTAN	JX
CO-40302	CO-40302HD	CO-40402	YELLOW	CO-40302-IEC	CO-40302HD-IEC	CO-40402-IEC	GREEN	CHROMEL	ALUMEL	KX
CO-40303	CO-40303HD	CO-40403	BLUE	CO-40303-IEC	CO-40303HD-IEC	CO-40403-IEC	BROWN	COPPER	CONSTANTAN	TX
CO-40304	CO-40304HD	CO-40404	GREEN	CO-40304-IEC	CO-40304HD-IEC	CO-40404-IEC	ORANGE	COPPER	ALLOY 11	SX/RX
CO-40305	CO-40305HD	CO-40405	PURPLE	CO-40305-IEC	CO-40305HD-IEC	CO-40405-IEC	VIOLET	CHROMEL	CONSTANTAN	EX
CO-40306	CO-40306HD	CO-40406	WHITE	CO-40306-IEC	CO-40306HD-IEC	CO-40406-IEC	WHITE	COPPER	COPPER	BX
(USE HD)	CO-40307HD	CO-40407	ORANGE	(USE HD)	CO-40307HD-IEC	CO-40407-IEC	PINK	NICROSIL	NISIL	NX

ACCESSORIES



COMPRESSION BRACKET	
ORDERING CODE	SHEATH DIAMETER
BK/FT21670-1	1/16" (.063)
BK/FT21670-2	1/8" (.125)
BK/FT21670-3	3/16" (.187)
BK/FT21670-4	1/4" (.25)

BRASS BUSHING INSERT	
ORDERING CODE	SHEATH DIAMETER
BSC5712-1	1/25" (.040)
BSC5712-2	1/16" (.063)
BSC5712-3	1/8" (.125)
BSC5712-4	3/16" (.187)
BSC5712-5	1/4" (.25)

WIRE CLAMP BRACKET	
ORDERING CODE	
BK/CL26000-2	



TEMPERATURE MEASUREMENT DESIGNER'S GUIDE
WWW.THERMO-ELECTRIC-DIRECT.COM

SECTION CONN QUICK-COUPPLING EXTENDED TEMPERATURE LIMITS STANDARD SIZE, 2-PIN

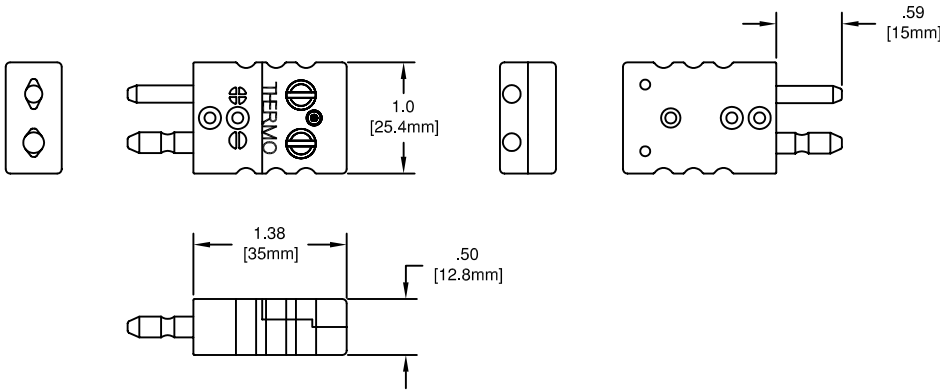
The information contained hereon shall be considered the sole property of Thermo Electric Company, Inc. The recipient thereof agrees not to disclose or reproduce said information to parties outside the recipient's organization without the written permission of Thermo Electric.

Doc. No.: TE-CO010109-CONN-020

CONNECTORS

QUICK WIRE CONNECTORS

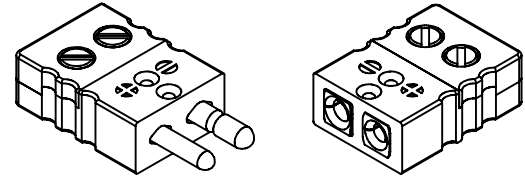
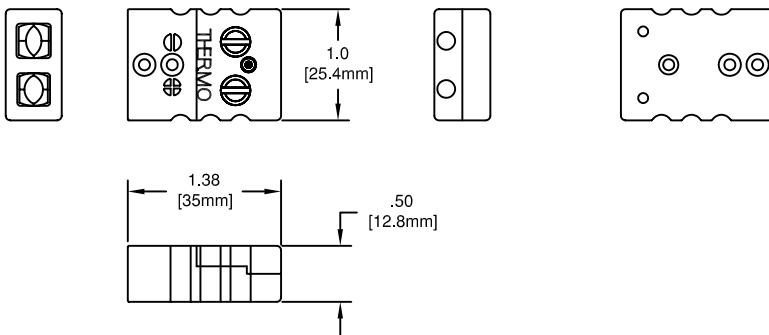
Are manufactured from the same rugged thermoplastic body material as the standard quick-coupling with the advantage of quick dependable wire connection in seconds. A 2-hole offset channel allows the wires to be inserted from the back then tightened using the access screws on top of the connector.



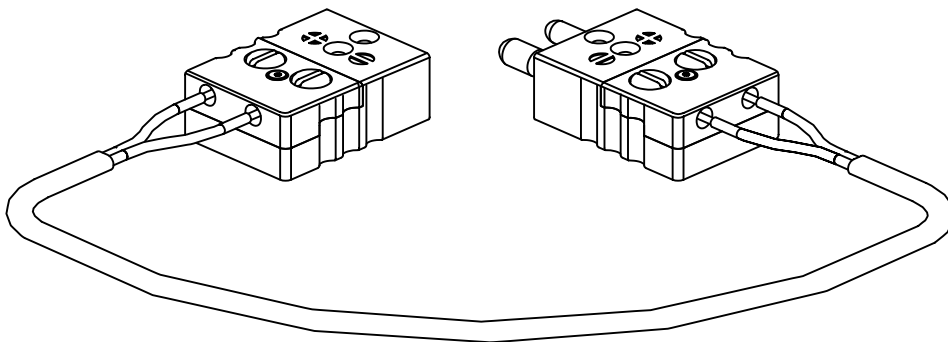
SPECIFICATIONS

CONNECTORS

Color Identification: ANSI-MC96 or IEC
Pin & Insert Material: Thermocouple Alloys
Body Material: High Impact Strength Thermoplastic
Polarized Pins
Spring Loaded Inserts
Single Captive Cover Screw
Maximum Temperature Limit: 390°F (200°C)
Wire Diameter: .079" (14Ga)



ORDERING CODE (ANSI)				ORDERING CODE (IEC)				CALIBRATION		SYMBOL
PLUG	PLUG (SOLID PINS)	JACK	BODY COLOR	PLUG	PLUG (SOLID PINS)	JACK	BODY COLOR	POSITIVE (+)	NEGATIVE (-)	
CO-45111	CO-45111HD	CO-45211	BLACK	CO-45111-IEC	CO-45111HD-IEC	CO-45211-IEC	BLACK	IRON	CONSTANTAN	JX
CO-45112	CO-45112HD	CO-45212	YELLOW	CO-45112-IEC	CO-45112HD-IEC	CO-45212-IEC	GREEN	CHROMEL	ALUMEL	KX
CO-45113	CO-45113HD	CO-45213	BLUE	CO-45113-IEC	CO-45113HD-IEC	CO-45213-IEC	BROWN	COPPER	CONSTANTAN	TX
CO-45114	CO-45114HD	CO-45214	GREEN	CO-45114-IEC	CO-45114HD-IEC	CO-45214-IEC	ORANGE	COPPER	ALLOY 11	SX/RX
CO-45115	CO-45115HD	CO-45215	PURPLE	CO-45115-IEC	CO-45115HD-IEC	CO-45215-IEC	VIOLET	CHROMEL	CONSTANTAN	EX
CO-45116	CO-45116HD	CO-45216	WHITE	CO-45116-IEC	CO-45116HD-IEC	CO-45216-IEC	WHITE	COPPER	COPPER	BX
(USE HD)	CO-45117HD	CO-45217	ORANGE	(USE HD)	CO-45117HD-IEC	CO-45217-IEC	PINK	NICROSIL	NISIL	NX



THERMO ELECTRIC

TEMPERATURE MEASUREMENT DESIGNER'S GUIDE
WWW.THERMO-ELECTRIC-DIRECT.COM

SECTION CONN

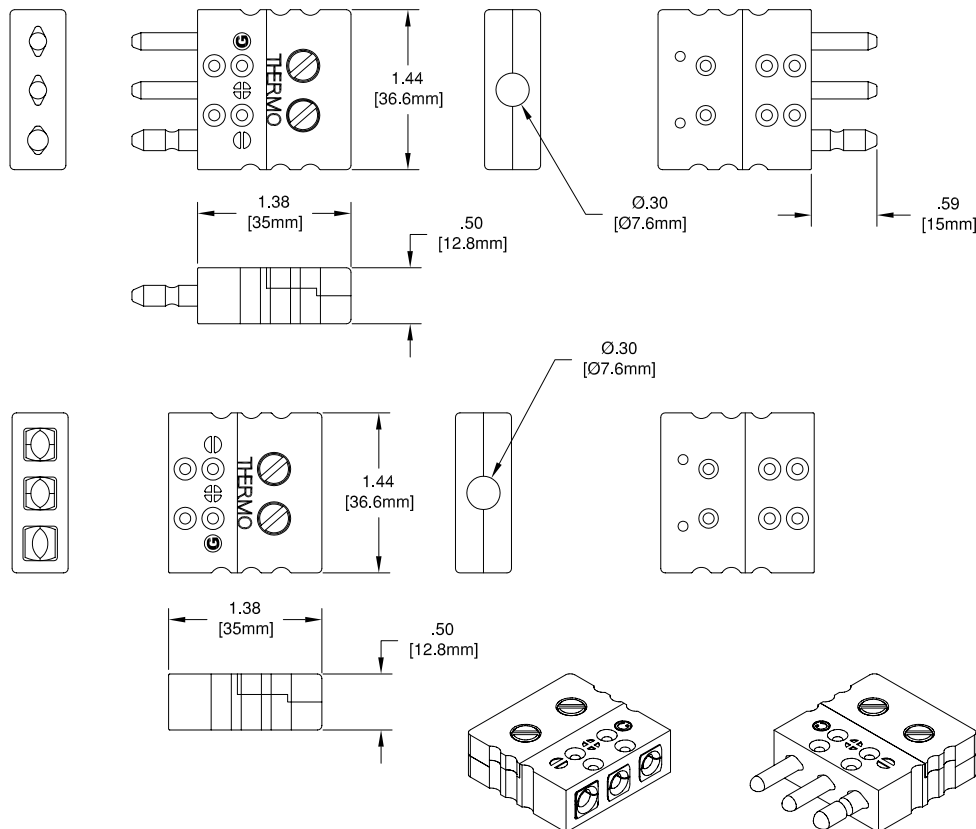
QUICK-COUPLING

STANDARD QUICK WIRE, 2-PIN

The information contained hereon shall be considered the sole property of Thermo Electric Company, Inc. The recipient thereof agrees not to disclose or reproduce said information to parties outside the recipient's organization without the written permission of Thermo Electric.

Doc. No.: TE-CO010109-CONN-030

CONNECTORS



THREE PIN CONNECTORS

This three pin connector simplifies the interconnection of shielded thermocouple circuits or those containing a ground wire. They are used in such applications as instrument/computer interfacing. All high purity copper pins and receptacles are also available for 3-wire RTD connections. The bodies are of a thermosetting plastic with molded polarity marking and ground connection. Plugs are available in standard pin or rugged solid pin construction.

SPECIFICATIONS

CONNECTORS

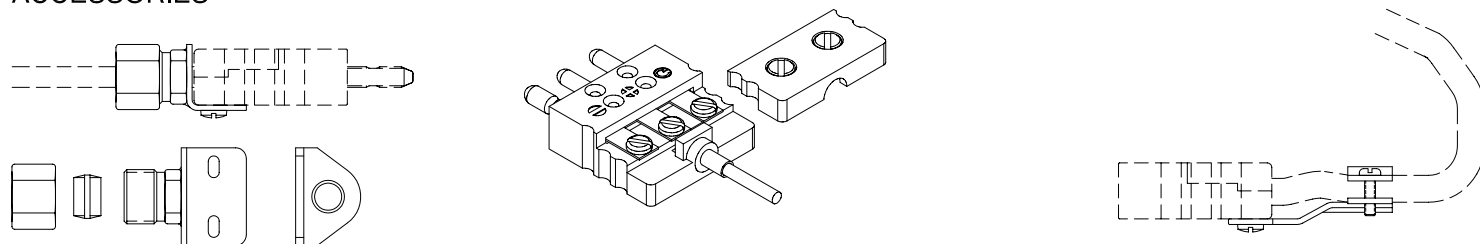
Color Dot Identification: ANSI-MC96 or IEC
Pin & Insert Material: Thermocouple Alloys, copper ground
Body Material: High Impact Strength Thermoplastic
Polarized Pins
Spring Loaded Inserts
Captive Cover Screws
Maximum Temperature Limit: 390°F (200°C)
Maximum Wire Diameter: .079" (14Ga)

ACCESSORIES

Compression Brackets: Stainless Steel, Brass insert,
Includes Mounting Screws
Brass Bushing Inserts: Crimp or Solder
Wire Clamp Brackets: Stainless Steel,
Includes Mounting Screws
Split Neoprene Bushings

ORDERING CODE (ANSI)				ORDERING CODE (IEC)				CALIBRATION		SYMBOL
PLUG	PLUG (SOLID PINS)	JACK	BODY COLOR	PLUG	PLUG (SOLID PINS)	JACK	BODY COLOR	POSITIVE (+)	NEGATIVE (-)	
CO-46101	CO-46101HD	CO-46201	BLACK	CO-46101-IEC	CO-46101HD-IEC	CO-46201-IEC	BLACK	IRON	CONSTANTAN	JX
CO-46102	CO-46102HD	CO-46202	YELLOW	CO-46102-IEC	CO-46102HD-IEC	CO-46202-IEC	GREEN	CHROMEL	ALUMEL	KX
CO-46103	CO-46103HD	CO-46203	BLUE	CO-46103-IEC	CO-46103HD-IEC	CO-46203-IEC	BROWN	COPPER	CONSTANTAN	TX
CO-46104	CO-46104HD	CO-46204	GREEN	CO-46104-IEC	CO-46104HD-IEC	CO-46204-IEC	ORANGE	COPPER	ALLOY 11	SX/RX
CO-46105	CO-46105HD	CO-46205	PURPLE	CO-46105-IEC	CO-46105HD-IEC	CO-46205-IEC	VIOLET	CHROMEL	CONSTANTAN	EX
CO-46106	CO-46106HD	CO-46206	WHITE	CO-46106-IEC	CO-46106HD-IEC	CO-46206-IEC	WHITE	COPPER	COPPER	BX
(USE HD)	CO-46107HD	CO-46207	ORANGE	(USE HD)	CO-46107HD-IEC	CO-46207-IEC	PINK	NICROSIL	NISIL	NX

ACCESSORIES



COMPRESSION BRACKET	
ORDERING CODE	SHEATH DIAMETER
BK/FT21670-1	1/16" (.063)
BK/FT21670-2	1/8" (.125)
BK/FT21670-3	3/16" (.187)
BK/FT21670-4	1/4" (.25)

BRASS BUSHING INSERT	
ORDERING CODE	SHEATH DIAMETER
BSC5712-1	1/25" (.040)
BSC5712-2	1/16" (.063)
BSC5712-3	1/8" (.125)
BSC5712-4	3/16" (.187)
BSC5712-5	1/4" (.25)

NEOPRENE BUSHING	
ORDERING CODE	
BGC6397	

WIRE CLAMP BRACKET	
ORDERING CODE	
BK/CL26000-2	



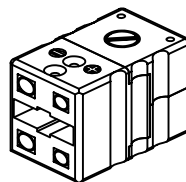
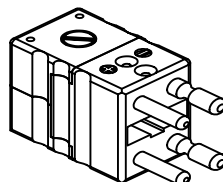
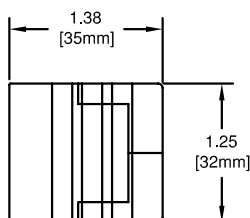
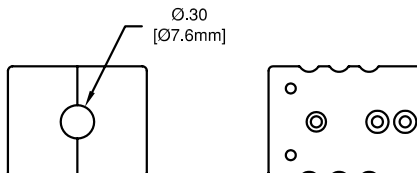
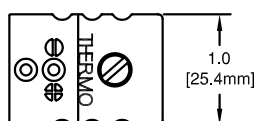
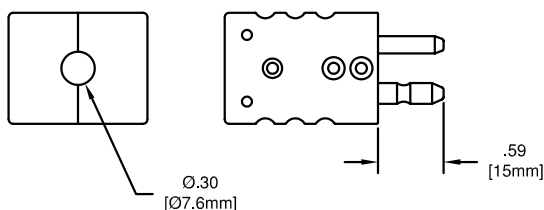
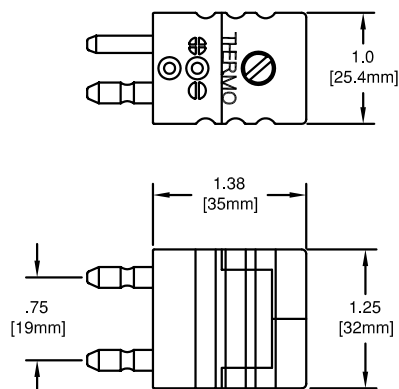
TEMPERATURE MEASUREMENT DESIGNER'S GUIDE
WWW.THERMO-ELECTRIC-DIRECT.COM

SECTION CONN QUICK-COUPLING STANDARD SIZE, 3-PIN

The information contained hereon shall be considered the sole property of Thermo Electric Company, Inc. The recipient thereof agrees not to disclose or reproduce said information to parties outside the recipient's organization without the written permission of Thermo Electric.

Doc. No.: TE-CO010109-CONN-040

CONNECTORS



DUPLEX CONNECTORS

Duplex connectors designed for quick coupling between dual junction thermocouples and extension wires. These connectors are used where control and indication or recording of the same point is required. They save space compared to single connector sets. The plugs can be mounted directly on a dual junction thermocouple while the jacks can be wired to pairs of extension wires.

SPECIFICATIONS

CONNECTORS

Color Dot Identification: ANSI-MC96 or IEC
Pin & Insert Material: Thermocouple Alloys
Body Material: High Impact Strength Thermoplastic
Polarized Pins
Spring Loaded Inserts
Captive Cover Screws
Maximum Temperature Limit: 390°F (200°C)
Maximum Wire Diameter: .079" (14Ga)

ACCESSORIES

Brass Bushing Inserts: Crimp or Solder
Split Neoprene Bushings

ORDERING CODE (ANSI)			ORDERING CODE (IEC)			CALIBRATION		SYMBOL
PLUG	JACK	BODY COLOR	PLUG	JACK	BODY COLOR	POSITIVE (+)	NEGATIVE (-)	
CO-40801	CO-40901	BLACK	CO-40801-IEC	CO-40901-IEC	BLACK	IRON	CONSTANTAN	JX
CO-40802	CO-40902	YELLOW	CO-40802-IEC	CO-40902-IEC	GREEN	CHROMEL	ALUMEL	KX
CO-40803	CO-40903	BLUE	CO-40803-IEC	CO-40903-IEC	BROWN	COPPER	CONSTANTAN	TX
CO-46804	CO-40904	GREEN	CO-40804-IEC	CO-40904-IEC	ORANGE	COPPER	ALLOY 11	SX/RX
CO-40805	CO-40905	PURPLE	CO-40805-IEC	CO-40905-IEC	VIOLET	CHROMEL	CONSTANTAN	EX
CO-40806	CO-40906	WHITE	CO-40806-IEC	CO-40906-IEC	WHITE	COPPER	COPPER	BX
CO-40807HD*	CO-40907	ORANGE	CO-40807HD-IEC*	CO-40907-IEC	PINK	NICROSIL	NISIL	NX

* NX available in solid pin only. all others available in standard hollow pin only.

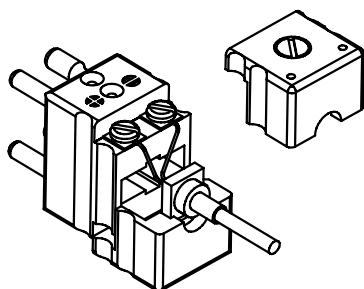
Thermo Electric's 2 circuit single jack panel provides for a single circuit duplex connection with any duplex plug.

Order code PA41802, located in Section PANN
Document Number TE-CO010109-PANN-020

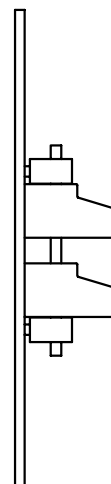
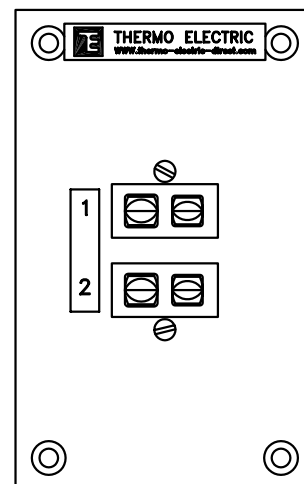
ACCESSORIES



NEOPRENE BUSHING
ORDERING CODE
BGC6397



BRASS BUSHING INSERT	
ORDERING CODE	SHEATH DIAMETER
BSC5712-1	1/25" (.040)
BSC5712-2	1/16" (.063)
BSC5712-3	1/8" (.125)
BSC5712-4	3/16" (.187)
BSC5712-5	1/4" (.25)



TEMPERATURE MEASUREMENT DESIGNER'S GUIDE
WWW.THERMO-ELECTRIC-DIRECT.COM

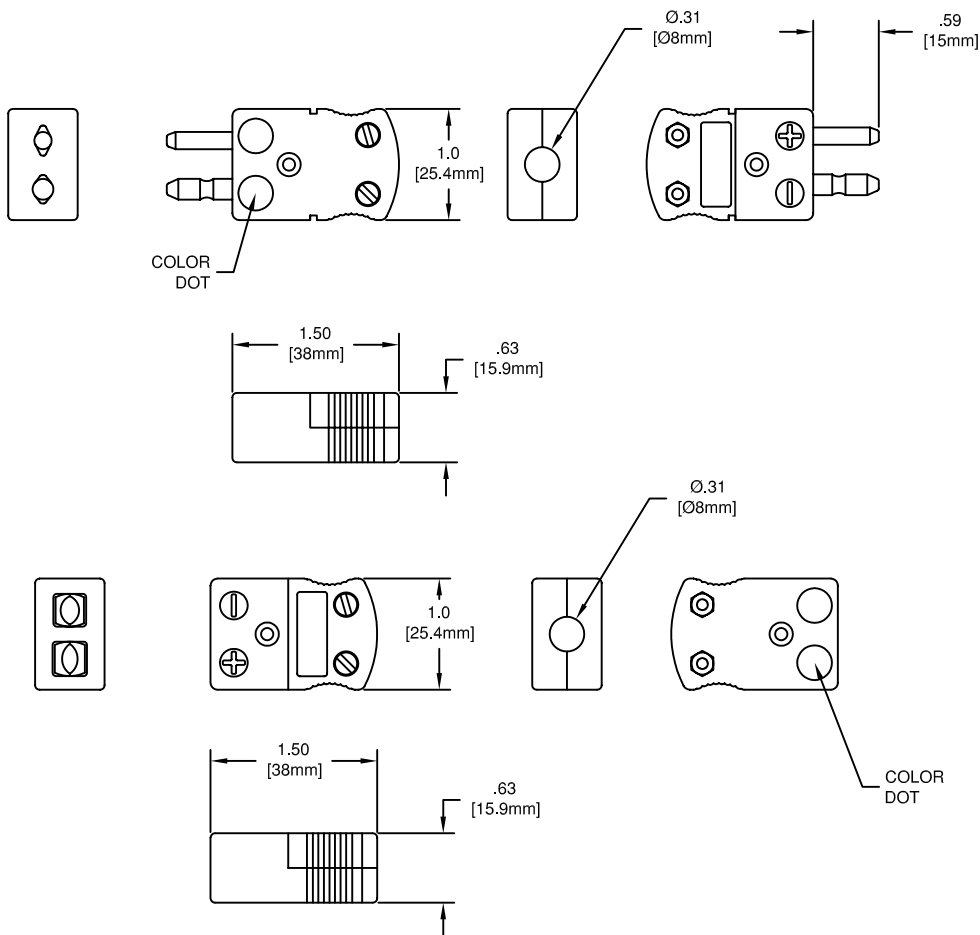
SECTION CONN

QUICK-COUPLING, DUPLEX STANDARD SIZE, 2-PIN

The information contained hereon shall be considered the sole property of Thermo Electric Company, Inc. The recipient thereof agrees not to disclose or reproduce said information to parties outside the recipient's organization without the written permission of Thermo Electric.

Doc. No.: TE-CO010109-CONN-050

CONNECTORS



ULTRA TEMP CONNECTORS

Designed for use where thermocouple circuits must be installed at elevated temperatures these connectors provide an ideal method of quick interconnection in such environments.

Copper vs Constantan (ISA-T) can be used accurately up to 750°F (380°C). Connectors for the noble metal types ISA-R and S are compensating alloys limited to 500°F (260°C).

Sides are recessed for easy finger grips.

SPECIFICATIONS

CONNECTORS

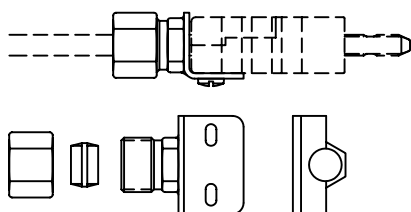
Color Dot Identification: ANSI-MC96 or IEC
Pin & Insert Material: Thermocouple Alloys
Body Material: High Strength Ceramic
Polarized Pins
Spring Loaded Inserts
Cover Screws with recess nuts
Maximum Temperature Limit: 1200°F (650°C)
Maximum Wire Diameter: .079" (14Ga)

ACCESSORIES

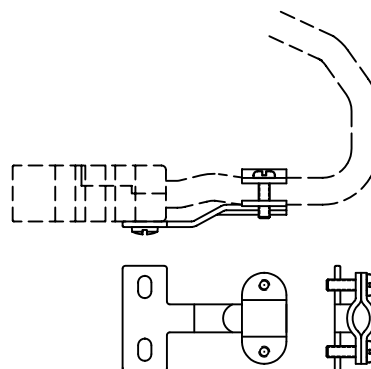
Compression Brackets: Stainless Steel, Brass insert,
Includes Mounting Screws
Wire Clamp Brackets: Stainless Steel,
Includes Mounting Screws

ORDERING CODE (ANSI)			ORDERING CODE (IEC)			CALIBRATION		SYMBOL
PLUG	JACK	BODY COLOR	PLUG	JACK	BODY COLOR	POSITIVE (+)	NEGATIVE (-)	
CO-43101	CO-43201	BLACK	CO-43101-IEC	CO-43201-IEC	BLACK	IRON	CONSTANTAN	JX
CO-43102	CO-43202	YELLOW	CO-43102-IEC	CO-43202-IEC	GREEN	CHROMEL	ALUMEL	KX
CO-43103	CO-43203	BLUE	CO-43103-IEC	CO-43203-IEC	BROWN	COPPER	CONSTANTAN	TX
CO-43104	CO-43204	GREEN	CO-43104-IEC	CO-43204-IEC	ORANGE	COPPER	ALLOY 11	SX/RX
CO-43105	CO-43205	PURPLE	CO-43105-IEC	CO-43205-IEC	VIOLET	CHROMEL	CONSTANTAN	EX
CO-43106	CO-43206	WHITE	CO-43106-IEC	CO-43206-IEC	WHITE	COPPER	COPPER	BX
CO-43107	CO-43207	ORANGE	CO-43107-IEC	CO-43207-IEC	PINK	NICROSIL	NISIL	NX

ACCESSORIES



COMPRESSION BRACKET	
ORDERING CODE	SHEATH DIAMETER
BK/FT20985-2	1/16" (.063)
BK/FT20985-3	1/8" (.125)
BK/FT20985-4	3/16" (.187)
BK/FT20985-5	1/4" (.25)



WIRE CLAMP BRACKET	
ORDERING CODE	
BK/CL26000-4	



TEMPERATURE MEASUREMENT DESIGNER'S GUIDE
WWW.THERMO-ELECTRIC-DIRECT.COM

SECTION CONN QUICK-COUPLING ULTRA TEMP

The information contained hereon shall be considered the sole property of Thermo Electric Company, Inc. The recipient thereof agrees not to disclose or reproduce said information to parties outside the recipient's organization without the written permission of Thermo Electric.

Doc. No.: TE-CO010109-CONN-070

CONNECTORS

MINIATURE CONNECTORS

Are ideal for use with fine gauge wire. Made of lightweight high impact plastic, these miniature connectors are designed to be virtually shatterproof. The connectors feature completely captive pins which strengthen the overall design. Finger grips allow ease of handling in making and breaking connections. Installation is easy; simply insert the wire between the two plates and tighten the screw. There is no need to wrap wire around the screw. The internal design eliminates the possibility of shorting wires between terminals.

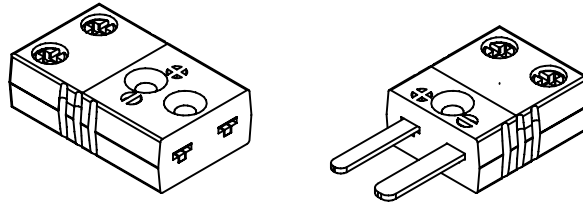
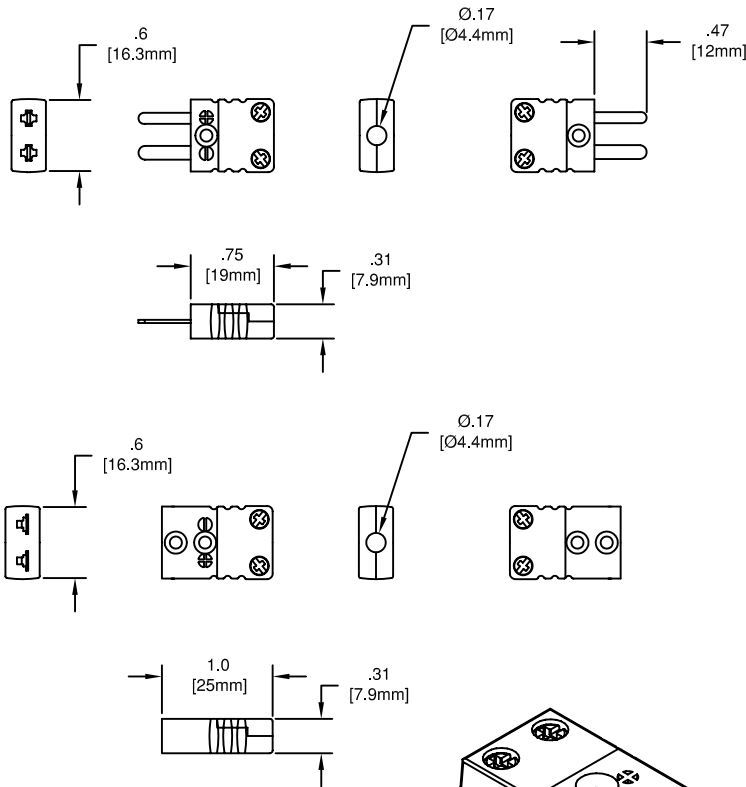
SPECIFICATIONS

CONNECTORS

Color Identification: ANSI-MC96 or IEC
Pin & Insert Material: Thermocouple Alloys
Body Material: High Impact Strength Thermoplastic
Polarized Pins
Spring Loaded Inserts
Maximum Temperature Limit: 390°F (200°C)
Maximum Wire Diameter: .024" (20Ga)

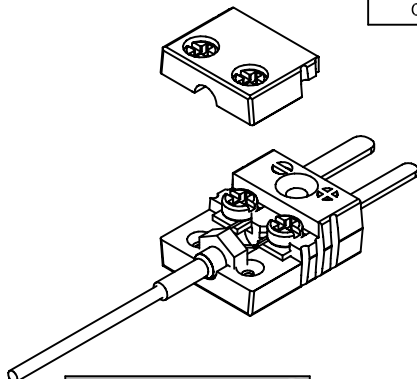
ACCESSORIES

Brass Bushing Inserts: Crimp or Solder
Wire Clamp Brackets: Stainless Steel,
Includes Mounting Screws
Split Neoprene Bushings

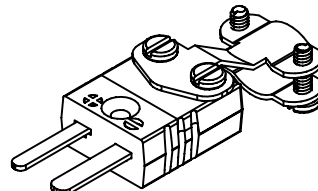


ORDERING CODE (ANSI)			ORDERING CODE (IEC)			CALIBRATION		SYMBOL
PLUG	JACK	BODY COLOR	PLUG	JACK	BODY COLOR	POSITIVE (+)	NEGATIVE (-)	
CO-41101	CO-41201	BLACK	CO-41101-IEC	CO-41201-IEC	BLACK	IRON	CONSTANTAN	JX
CO-41102	CO-41202	YELLOW	CO-41102-IEC	CO-41202-IEC	GREEN	CHROMEL	ALUMEL	KX
CO-41103	CO-41203	BLUE	CO-41103-IEC	CO-41203-IEC	BROWN	COPPER	CONSTANTAN	TX
CO-41104	CO-41204	GREEN	CO-41104-IEC	CO-41204-IEC	ORANGE	COPPER	ALLOY 11	SX/RX
CO-41105	CO-41205	PURPLE	CO-41105-IEC	CO-41205-IEC	VIOLET	CHROMEL	CONSTANTAN	EX
CO-41106	CO-41206	WHITE	CO-41106-IEC	CO-41206-IEC	WHITE	COPPER	COPPER	BX
CO-41107	CO-41207	ORANGE	CO-41107-IEC	CO-41207-IEC	PINK	NICROSIL	NISIL	NX

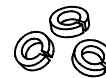
ACCESSORIES



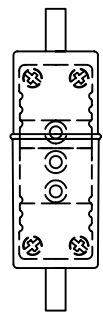
BRASS BUSHING INSERT	
ORDERING CODE	SHEATH DIAMETER
BSD1639-1	1/25" (.040)
BSD1639-2	1/16" (.063)
BSD1641	1/8" (.125)



WIRE CLAMP BRACKET	
ORDERING CODE	
BK/CL28519	



NEOPRENE BUSHING	
ORDERING CODE	
BGB7986	



MOISTURE PROOF BOOT	
ORDERING CODE	
BTD6442	



THERMO ELECTRIC

TEMPERATURE MEASUREMENT DESIGNER'S GUIDE
WWW.THERMO-ELECTRIC-DIRECT.COM

SECTION CONN QUICK-COUPLING MINIATURE, 2-PIN

The information contained hereon shall be considered the sole property of Thermo Electric Company, Inc. The recipient thereof agrees not to disclose or reproduce said information to parties outside the recipient's organization without the written permission of Thermo Electric.

Doc. No.: TE-CO010109-CONN-080

INTRODUCTION

THERMO ELECTRIC COMPANY INC.

CORPORATE OFFICES

1193 McDermott Drive

WEST CHESTER, PENNSYLVANIA 19380

Phone: 1-610-692-7990

Toll Free Number: 1-800-766-4020

Fax: 1-610-430-1325

E-Mail: tepasales@te-direct.com



THERMO ELECTRIC

THERMO ELECTRIC COMPANY INDIA PVT. LTD.

No. 362, SECTOR-7

IMT MANESAR - 122050 GURGAON

HARYANA

Phone: 91-124-400-6371

GSM: 91-9654305463 & 91-9871903246

Fax: 91-124-400-6372

E-Mail: teinsales@te-direct.com



THERMO ELECTRIC

THERMO ELECTRIC COMPANY UK LTD.

Building 1000

KENT SCIENCE PARK

SITTINGBOURNE

ME9 8PS

UNITED KINGDOM

Phone: 0044-1795-410414

Fax: 0044-1795-410415

E-Mail: teuksales@te-direct.com



THERMO ELECTRIC

THERMO ELECTRIC (CANADA) LTD.

12-4580 EASTGATE PKWY

MISSISSAUGA, ON L4W4K4 - CANADA

Phone: 1-905-451-0813

Toll Free Number: 1-800-663-3278

Fax: 905-451-4606

E-Mail: tecasales@te-direct.com



THERMO ELECTRIC

THERMO ELECTRIC COMPANY BVBA

Rijsberdijk 57

2490 BALEN, BELGIUM

Phone: 0032-14/81.52.47

Fax: 0032-14/81.52.49

E-Mail: sales@thermo-electric.be

*Temperature Measurement and
Sensor Solutions from
The Global Leader in Manufacture & Design*

THERMO ELECTRIC



THERMO ELECTRIC

TEMPERATURE MEASUREMENT DESIGNER'S GUIDE
WWW.THERMO-ELECTRIC-DIRECT.COM

SECTION INTR

CONTACTS

The information contained hereon shall be considered the sole property of Thermo Electric Company, Inc. The recipient thereof agrees not to disclose or reproduce said information to parties outside the recipient's organization without the written permission of Thermo Electric.

Doc. No.: TE-CO062916-INTR-020