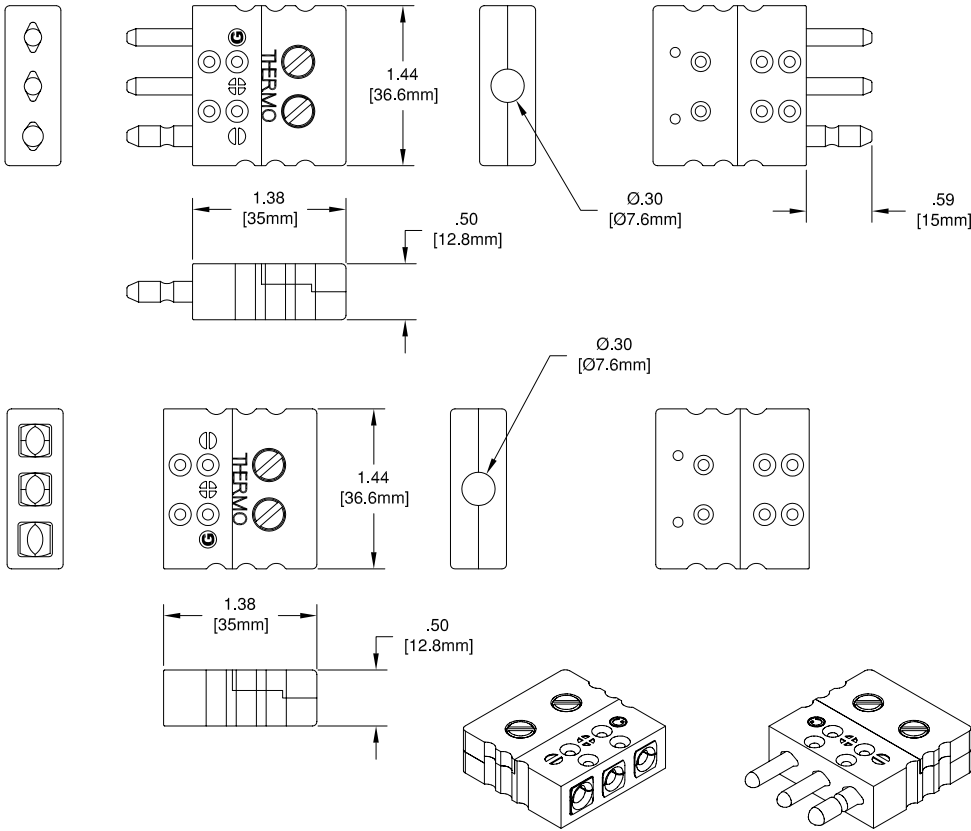


# CONNECTORS



## THREE PIN CONNECTORS

This three pin connector simplifies the interconnection of shielded thermocouple circuits or those containing a ground wire. They are used in such applications as instrument/computer interfacing. All high purity copper pins and receptacles are also available for 3-wire RTD connections. The bodies are of a thermosetting plastic with molded polarity marking and ground connection. Plugs are available in standard pin or rugged solid pin construction.

## SPECIFICATIONS

### CONNECTORS

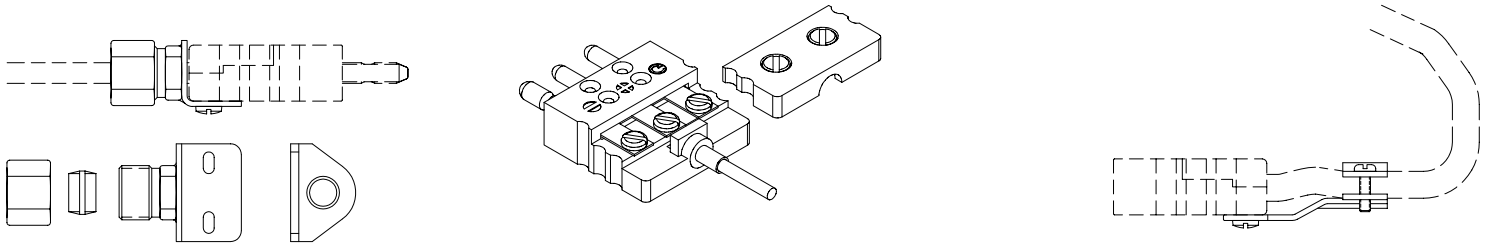
Color Dot Identification: ANSI-MC96 or IEC  
 Pin & Insert Material: Thermocouple Alloys, copper ground  
 Body Material: High Impact Strength Thermoplastic  
 Polarized Pins  
 Spring Loaded Inserts  
 Captive Cover Screws  
 Maximum Temperature Limit: 390°F (200°C)  
 Maximum Wire Diameter: .079" (14Ga)

### ACCESSORIES

Compression Brackets: Stainless Steel, Brass insert, Includes Mounting Screws  
 Brass Bushing Inserts: Crimp or Solder  
 Wire Clamp Brackets: Stainless Steel, Includes Mounting Screws  
 Split Neoprene Bushings

ORDERING CODE (ANSI)				ORDERING CODE (IEC)				CALIBRATION		SYMBOL
PLUG	PLUG (SOLID PINS)	JACK	BODY COLOR	PLUG	PLUG (SOLID PINS)	JACK	BODY COLOR	POSITIVE (+)	NEGATIVE (-)	
CO-46101	CO-46101HD	CO-46201	BLACK	CO-46101-IEC	CO-46101HD-IEC	CO-46201-IEC	BLACK	IRON	CONSTANTAN	JX
CO-46102	CO-46102HD	CO-46202	YELLOW	CO-46102-IEC	CO-46102HD-IEC	CO-46202-IEC	GREEN	CHROMEL	ALUMEL	KX
CO-46103	CO-46103HD	CO-46203	BLUE	CO-46103-IEC	CO-46103HD-IEC	CO-46203-IEC	BROWN	COPPER	CONSTANTAN	TX
CO-46104	CO-46104HD	CO-46204	GREEN	CO-46104-IEC	CO-46104HD-IEC	CO-46204-IEC	ORANGE	COPPER	ALLOY 11	SX/RX
CO-46105	CO-46105HD	CO-46205	PURPLE	CO-46105-IEC	CO-46105HD-IEC	CO-46205-IEC	VIOLET	CHROMEL	CONSTANTAN	EX
CO-46106	CO-46106HD	CO-46206	WHITE	CO-46106-IEC	CO-46106HD-IEC	CO-46206-IEC	WHITE	COPPER	COPPER	BX
(USE HD)	CO-46107HD	CO-46207	ORANGE	(USE HD)	CO-46107HD-IEC	CO-46207-IEC	PINK	NICROSIL	NISIL	NX

## ACCESSORIES



COMPRESSION BRACKET	
ORDERING CODE	SHEATH DIAMETER
BK/FT21670-1	1/16" (.063)
BK/FT21670-2	1/8" (.125)
BK/FT21670-3	3/16" (.187)
BK/FT21670-4	1/4" (.25)

BRASS BUSHING INSERT	
ORDERING CODE	SHEATH DIAMETER
BSC5712-1	1/25" (.040)
BSC5712-2	1/16" (.063)
BSC5712-3	1/8" (.125)
BSC5712-4	3/16" (.187)
BSC5712-5	1/4" (.25)

NEOPRENE BUSHING	
ORDERING CODE	
BGC6397	

WIRE CLAMP BRACKET	
ORDERING CODE	
BK/CL26000-2	



TEMPERATURE MEASUREMENT DESIGNER'S GUIDE  
 WWW.THERMO-ELECTRIC-DIRECT.COM

## SECTION CONN QUICK-COUPLING STANDARD SIZE, 3-PIN

The information contained hereon shall be considered the sole property of Thermo Electric Company, Inc. The recipient thereof agrees not to disclose or reproduce said information to parties outside the recipient's organization without the written permission of Thermo Electric.

Doc. No.: TE-CO010109-CONN-040