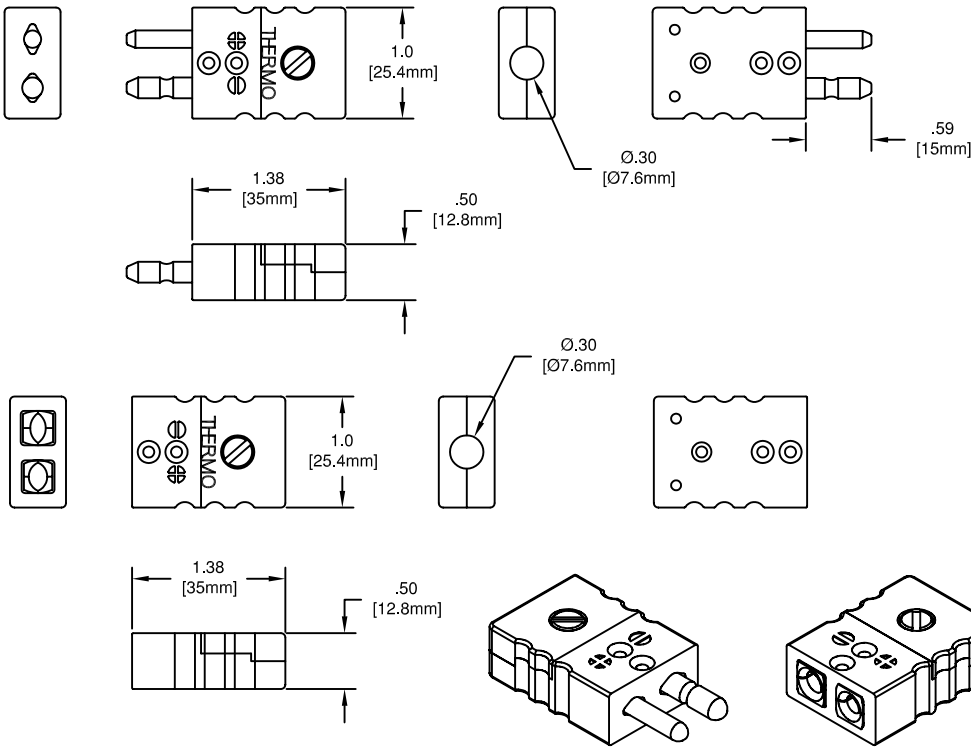


# CONNECTORS



## STANDARD CONNECTORS

Standard polarized quick-coupling plugs and jacks for thermocouple circuits were introduced first by Thermo Electric over sixty years ago. Like their predecessors, today's connectors can be installed at any point in a thermocouple circuit where quick wire to wire or thermocouple to wire disconnection are required. These connectors feature color codes to ISA or IEC standards, polarity marks molded into the connector bodies, and are polarized to prevent mismatching. Plugs are available in standard pin or rugged solid pin construction.

### SPECIFICATIONS

#### CONNECTORS

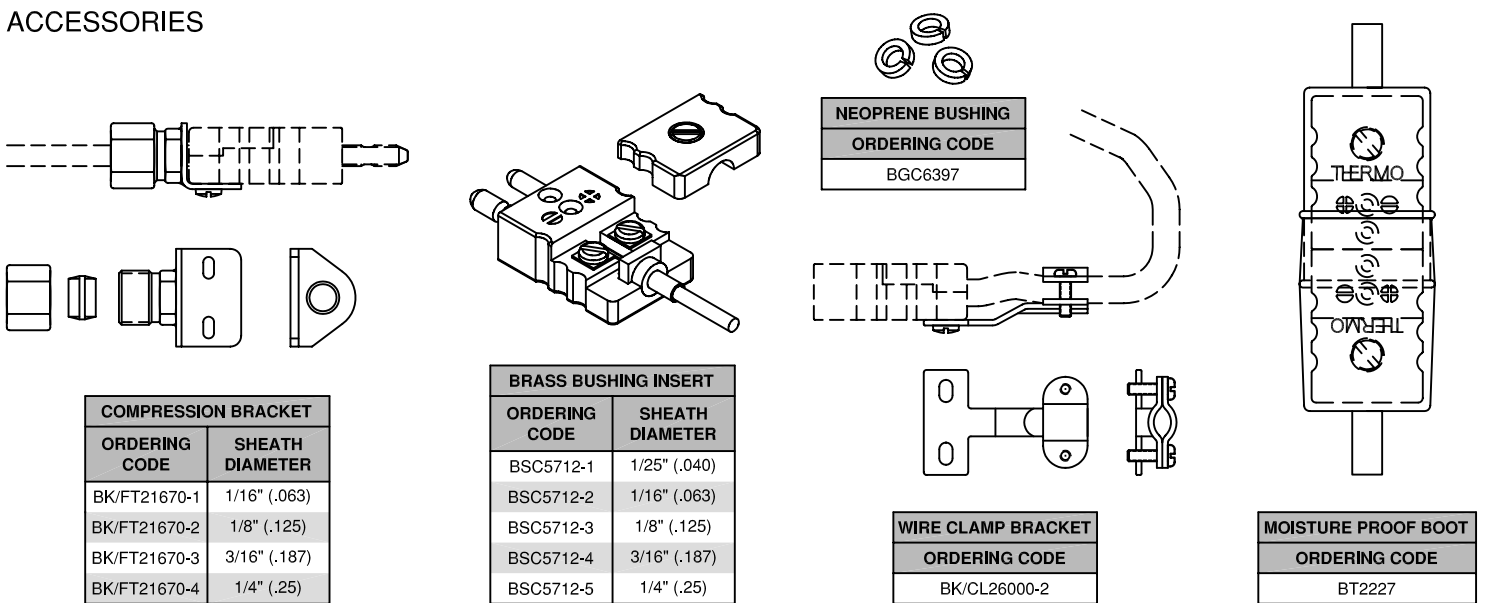
Color Identification: ANSI-MC96 or IEC  
 Pin & Insert Material: Thermocouple Alloys  
 Body Material: High Impact Strength Thermoplastic  
 Polarized Pins  
 Spring Loaded Inserts  
 Single Captive Cover Screw  
 Maximum Temperature Limit: 390°F (200°C)  
 Maximum Wire Diameter: .079" (14Ga)

#### ACCESSORIES

Compression Brackets: Stainless Steel, Brass insert, Includes Mounting Screws  
 Brass Bushing Inserts: Crimp or Solder  
 Wire Clamp Brackets: Stainless Steel, Includes Mounting Screws  
 Split Neoprene Bushings  
 Moisture Proof Boots: Neoprene Rubber

ORDERING CODE (ANSI)				ORDERING CODE (IEC)				CALIBRATION		SYMBOL
PLUG	PLUG (SOLID PINS)	JACK	BODY COLOR	PLUG	PLUG (SOLID PINS)	JACK	BODY COLOR	POSITIVE (+)	NEGATIVE (-)	
CO-45101	CO-45101HD	CO-45201	BLACK	CO-45101-IEC	CO-45101HD-IEC	CO-45201-IEC	BLACK	IRON	CONSTANTAN	JX
CO-45102	CO-45102HD	CO-45202	YELLOW	CO-45102-IEC	CO-45102HD-IEC	CO-45202-IEC	GREEN	CHROMEL	ALUMEL	KX
CO-45103	CO-45103HD	CO-45203	BLUE	CO-45103-IEC	CO-45103HD-IEC	CO-45203-IEC	BROWN	COPPER	CONSTANTAN	TX
CO-45104	CO-45104HD	CO-45204	GREEN	CO-45104-IEC	CO-45104HD-IEC	CO-45204-IEC	ORANGE	COPPER	ALLOY 11	SX/RX
CO-45105	CO-45105HD	CO-45205	PURPLE	CO-45105-IEC	CO-45105HD-IEC	CO-45205-IEC	VIOLET	CHROMEL	CONSTANTAN	EX
CO-45106	CO-45106HD	CO-45206	WHITE	CO-45106-IEC	CO-45106HD-IEC	CO-45206-IEC	WHITE	COPPER	COPPER	BX
(USE HD)	CO-45107HD	CO-45207	ORANGE	(USE HD)	CO-45107HD-IEC	CO-45207-IEC	PINK	NICROSIL	NISIL	NX

## ACCESSORIES



COMPRESSION BRACKET	
ORDERING CODE	SHEATH DIAMETER
BK/FT21670-1	1/16" (.063)
BK/FT21670-2	1/8" (.125)
BK/FT21670-3	3/16" (.187)
BK/FT21670-4	1/4" (.25)

BRASS BUSHING INSERT	
ORDERING CODE	SHEATH DIAMETER
BSC5712-1	1/25" (.040)
BSC5712-2	1/16" (.063)
BSC5712-3	1/8" (.125)
BSC5712-4	3/16" (.187)
BSC5712-5	1/4" (.25)

NEOPRENE BUSHING  
 ORDERING CODE  
 BGC6397

WIRE CLAMP BRACKET  
 ORDERING CODE  
 BK/CL26000-2

MOISTURE PROOF BOOT  
 ORDERING CODE  
 BT2227



TEMPERATURE MEASUREMENT DESIGNER'S GUIDE  
 WWW.THERMO-ELECTRIC-DIRECT.COM

## SECTION CONN QUICK-COUPLING STANDARD SIZE, 2-PIN

The information contained hereon shall be considered the sole property of Thermo Electric Company, Inc. The recipient thereof agrees not to disclose or reproduce said information to parties outside the recipient's organization without the written permission of Thermo Electric.

Doc. No.: TE-CO010109-CONN-010