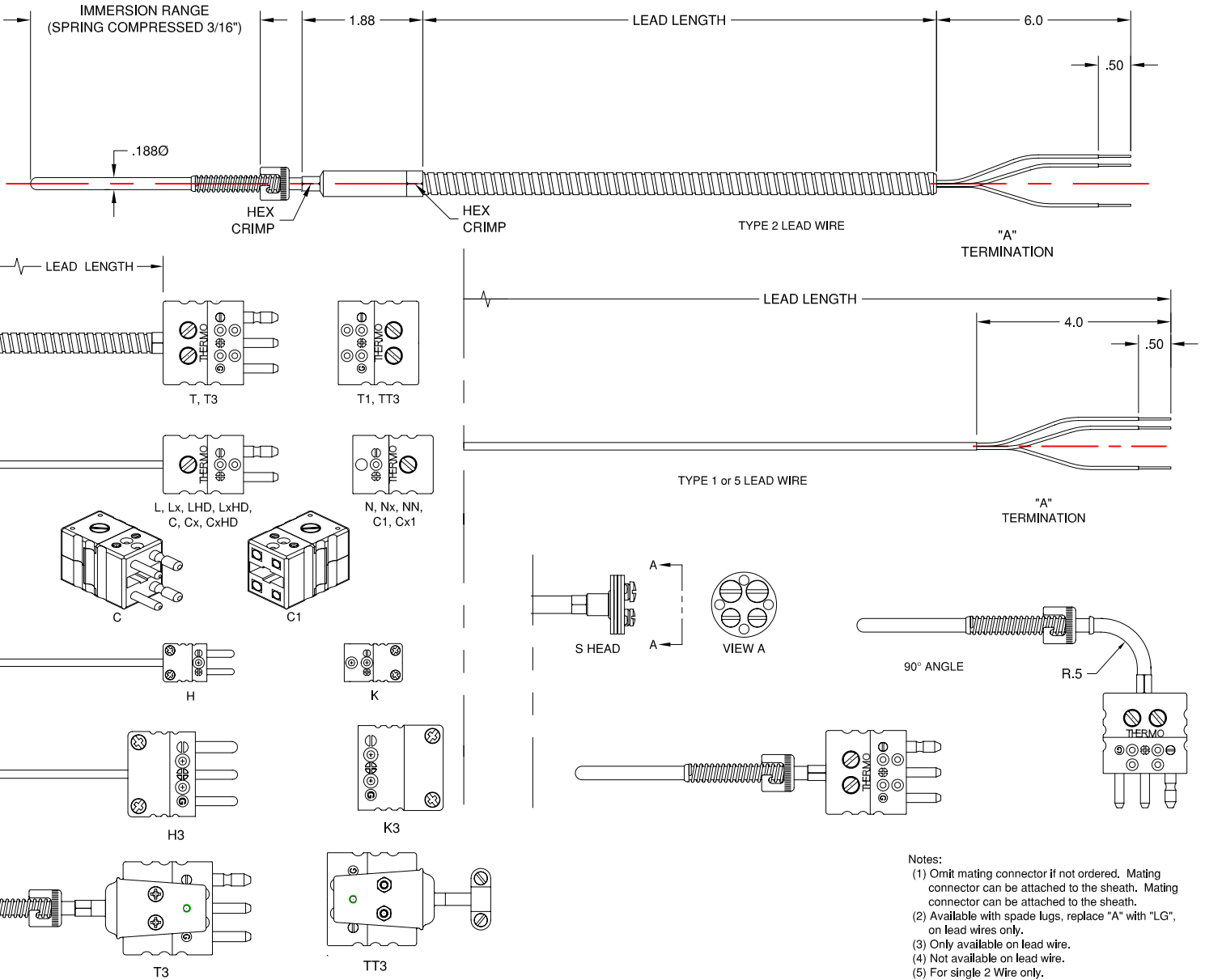


SURFACE MOUNT THERMOCOUPLES & RTD'S



- Notes:
- (1) Omit mating connector if not ordered. Mating connector can be attached to the sheath.
 - (2) Available with spade lugs, replace "A" with "LG", on lead wires only.
 - (3) Only available on lead wire.
 - (4) Not available on lead wire.
 - (5) For single 2 Wire only.

ORDERING CODE



CODE	STRUCTURE
	SINGLE (LEAVE BLANK)
D	DUPLEX

CODE	MOUNTING POSITION
BAY	STRAIGHT
BAY45	45° ANGLE
BAY90	90° ANGLE

CODE	RANGE
1	1/8" - 1 3/4"
1	1/2" - 2 1/8"
2	2 - 2 5/8"
2	1/2" - 3 1/8"
3	3 - 3 5/8"
3	1/2" - 4 1/8"
4	4 - 4 5/8"
4	1/2" - 5 1/8"
5	5 - 5 5/8"
5	1/2" - 6 1/8"
6	6 - 6 5/8"
6	1/2" - 7 1/8"
7	7 - 7 5/8"
7	1/2" - 8 1/8"
8	8 - 8 5/8"

CODE	LEAD TYPE
0	NO LEAD WIRE
1	FIBERGLASS
2	FIBERGLASS, ARMOR OVERALL
5	TEFLON

CODE	TERMINATION	MATING CONN. (NOTE 1)	
		CODE	TEMPERATURE LIMIT
A	BARE ENDS (NOTE 2)		
T	THREE PIN PLUG	T1	390°F(200°C)
L	STANDARD SIZE PLUG (NOTE 5)	N	390°F(200°C)
H	MINIATURE PLUG (NOTE 3 & 5)	K	390°F(200°C)
S	MINIATURE 3 PIN PLUG (NOTE 3)	K3	390°F(200°C)
C	COOLANT HEAD (NOTE 4)		350°F(177°C)
T3	STANDARD SIZE DUPLEX PLUG	C1	390°F(200°C)
	STANDARD SIZE 6 PIN PLUG	TT3	390°F(200°C)

For an item that does not fall within the catalog description an (SP) can be added to the ordering code as part of a custom construction.



TEMPERATURE MEASUREMENT DESIGNER'S GUIDE
WWW.THERMO-ELECTRIC-DIRECT.COM

SECTION SUTR BAYONET RTD'S

The information contained hereon shall be considered the sole property of Thermo Electric Company, Inc. The recipient thereof agrees not to disclose or reproduce said information to parties outside the recipient's organization without the written permission of Thermo Electric.

Doc. No.: TE-CO010109-SUTR-070