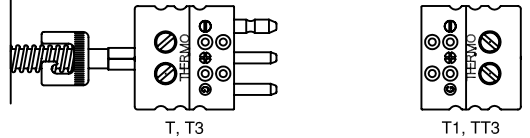
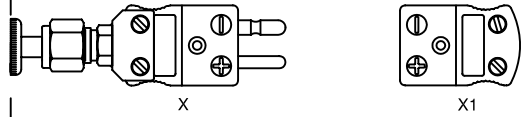
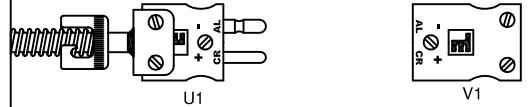
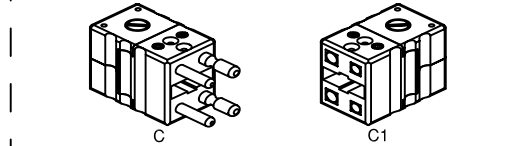
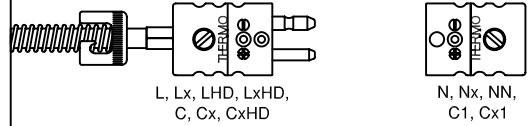
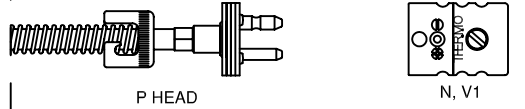
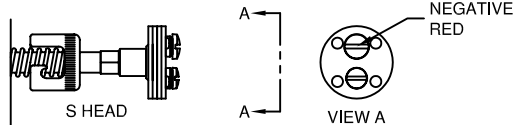
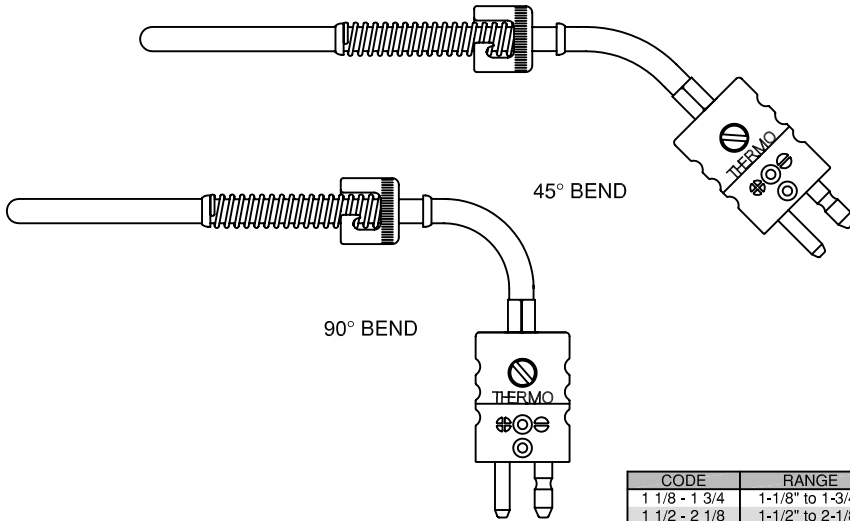
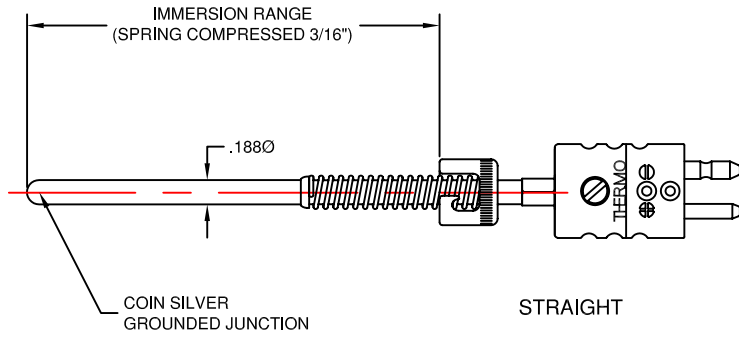


SURFACE MOUNT THERMOCOUPLES & RTD'S



CODE	RANGE
1 1/8 - 1 3/4	1-1/8" to 1-3/4"
1 1/2 - 2 1/8	1-1/2" to 2-1/8"
2 - 2 5/8	2" to 2-5/8"
2 1/2 - 3 1/8	2-1/2" to 3-1/8"
3 - 3 5/8	3" to 3-5/8"
3 1/2 - 4 1/8	3-1/2" to 4-1/8"
4 - 4 5/8	4" to 4-5/8"
4 1/2 - 5 1/8	4-1/2" to 5-1/8"
5 - 5 5/8	5" to 5-5/8"
5 1/2 - 6 1/8	5-1/2" to 6-1/8"
6 - 6 5/8	6" to 6-5/8"
6 1/2 - 7 1/8	6-1/2" to 7-1/8"
7 - 7 5/8	7" to 7-5/8"
7 1/2 - 8 1/8	7-1/2" to 8-1/8"
8 - 8 5/8	8" to 8-5/8"

STANDARD	CODE SPECIAL (NOTE 1)	CALIBRATION
J	JJ	IRON(+) vs CONSTANTAN(-)
T	TT	COPPER(+) vs CONSTANTAN(-)
K	KK	CHROMEL(+) vs ALUMEL(-)
E	EE	CHROMEL(+) vs CONSTANTAN(-)
N	NN	NICROSIL(+) vs NISIL(-)

CODE	DUPLEX
DUAL	USE ONLY WHEN REQUIRED

ORDERING CODE

2 J 0 1 3 1 L / N - I = 4-4 5/8

EXAMPLE: 2J0131L/N I=1 1/8-1 3/4
2J0331C/C1-DUAL I=4-4 5/8

CODE	MOUNTING POSITION
1	STRAIGHT
2	45° ANGLE
3	90° ANGLE

CODE	TERMINATION	MATING CONN. (NOTE 2)	
		CODE	TEMPERATURE LIMIT
L	STANDARD SIZE PLUG	N	390°F(200°C)
LHD	STANDARD SIZE SOLID PIN PLUG	N	390°F(200°C)
Lx	EXTENDED LIMITS PLUG	Nx	660°F(320°C)
LxHD	EXTENDED LIMITS SOLID PIN PLUG	Nx	660°F(320°C)
U1	IMPACT RESISTANT PHENOLIC PLUG	V1	300°F(150°C)
X	ULTRA-TEMP PLUG	X1	1000°F(538°C)
T	THREE PIN PLUG	T1	390°F(200°C)
S	COOLANT HEAD		350°F(177°C)
P	COOLANT PLUG	N, V1	350°F(177°C)
C	STANDARD SIZE DUPLEX PLUG	C1	390°F(200°C)
Cx	EXTENDED LIMITS DUPLEX PLUG	Cx1	660°F(320°C)
CxHD	EXT. LIMITS SOLID PIN DUPLEX PLUG	Cx1	660°F(320°C)
T3	THREE PIN DUPLEX PLUG	TT3	390°F(200°C)

Notes:

- (1) Meets or exceeds Special Initial Calibration Tolerances per ANSI MC96.1-1982 and ASTM E230-1993
- (2) Omit mating connector if not ordered. Mating connector can be attached to the sheath.

Specifications:

Sheath Material: 316 Stn. Stl.
Measuring Junction: Coin Silver Tip
Insulation: Fiberglass
Maximum Temperature: 950° F (510° C)



TEMPERATURE MEASUREMENT DESIGNER'S GUIDE
WWW.THERMO-ELECTRIC-DIRECT.COM

SECTION SUTR BAYONET THERMOCOUPLES with CONNECTORS

The information contained hereon shall be considered the sole property of Thermo Electric Company, Inc. The recipient thereof agrees not to disclose or reproduce said information to parties outside the recipient's organization without the written permission of Thermo Electric.

Doc. No.: TE-CO010109-SUTR-030