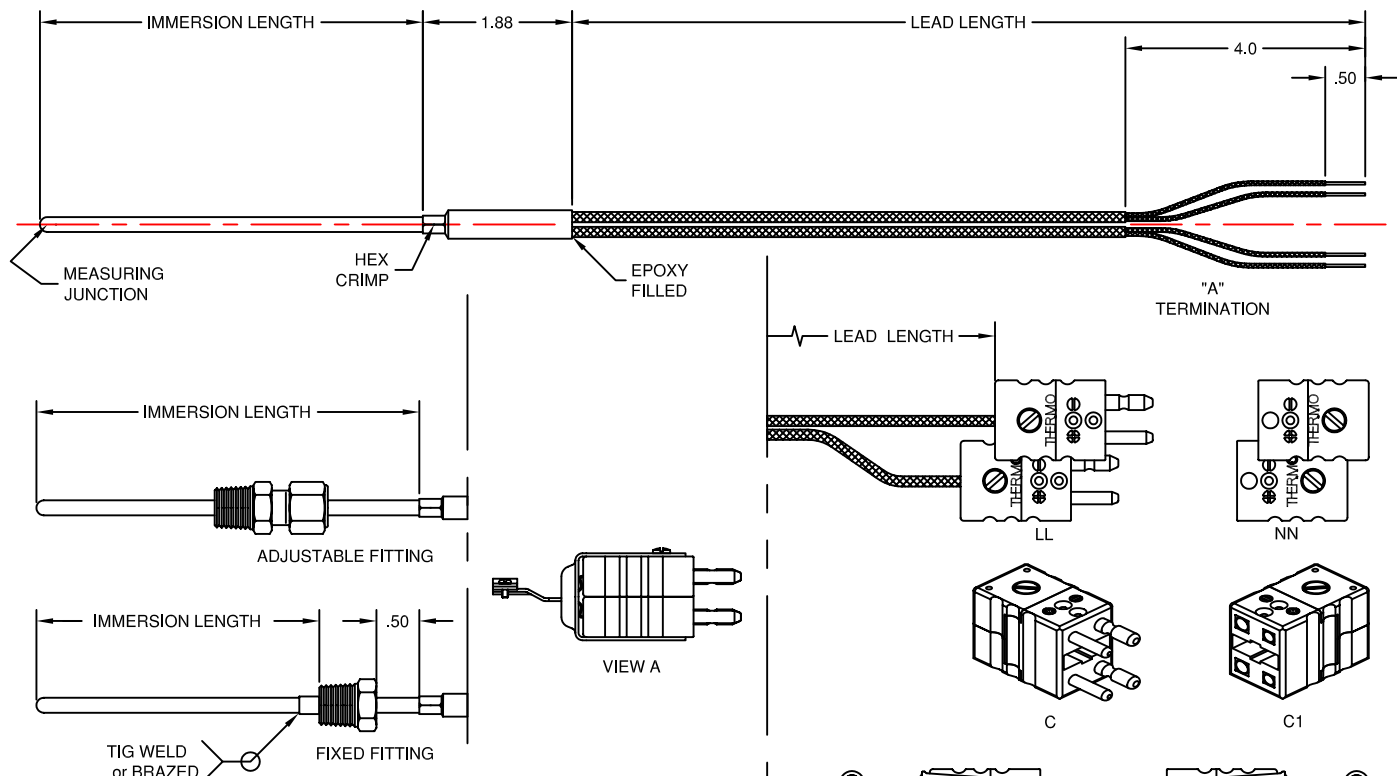


# IMMERSION THERMOCOUPLES



- Notes:**
- (1) Meets or exceeds Special Initial Calibration Tolerances per ANSI MC96.1-1982 and ASTM E230-1993
  - (2) KKS & EES denotes stabilized thermocouple and special tolerance.
  - (3) Specify length of reduced tip when ordering.
  - (4) Contact factory for other calibrations and/or sheath materials.
  - (5) Standard 20 gauge stranded conductors.
  - (6) Omit mating connector if not ordered. Mating connector can be attached to the leads.
  - (7) Available with spade lugs, replace "A" with "LG".
  - (8) For an item that does not fall within the catalog description an (SP) can be added to the ordering code as part of a custom construction.

CODE	CALIBRATION
J	IRON(+) vs CONSTANTAN(-)
K	CHROMEL(+) vs ALUMEL(-)
T	COPPER(+) vs CONSTANTAN(-)
E	CHROMEL(+) vs CONSTANTAN(-)
N	NICROSIL(+) vs NISIL(-)
KKS	CHROMEL(+) vs ALUMEL(-) (NOTE 2)
EES	CHROMEL(+) vs CONSTANTAN(-) (NOTE 2)

CODE	SHEATH DIAMETER		
	FRACTION	DECIMAL	METRIC
125	1/25"	.040	1.1mm
116	1/16"	.063	1.6mm
18	1/8"	.125	3.2mm
316	3/16"	.187	4.8mm
14	1/4"	.250	6.4mm
516	5/16"	.313	8.0mm
38	3/8"	.375	9.5mm

CODE	MEASURING JUNCTION
DG	GROUNDING
DU	UNGROUNDING
DRG	REDUCED GRD. (NOTE 3)
DRU	REDUCED UNGRD. (NOTE 3)
DE	EXPOSED LOOP

CODE	SHEATH MATERIAL	
	MATERIAL	STD. CALIBRATIONS (NOTE 4)
304	304 STN. STL.	J, K, T
316	316 STN. STL.	J, K, T, E, N
310	310 STN. STL.	J, K, E
1600	INCONEL 600	K, N, KKS(NOTE 2), EES(NOTE 2)

CALIBRATION	SHEATH DIAMETER	MEASURING JUNCTION	SHEATH MATERIAL	FITTING	IMMERSION LENGTH	LEAD LENGTH	LEAD TYPE	TERMINATION	MATING CONNECTOR
KK	14	DG	1600	FX1/4	6	36	3	Cx	Cx1

CODE	FITTING	CODE	THREAD SIZE
BR	ADJUSTABLE BRASS, BRASS INSERT	1/8	1/8"NPT
BRT	READJUSTABLE BRASS, TEFLON INSERT	1/4	1/4"NPT
SS	ADJUSTABLE STN. STL., STN. STL. INSERT	1/2	1/2"NPT
SST	READJUSTABLE STN. STL., TEFLON INSERT		
SSL	READJUSTABLE STN. STL., LAVA INSERT		
FX	FIXED STN. STL., ATTACHED TO SHEATH		
0	FITTING NOT REQUIRED		

CODE	IMMERSION LENGTH (IN INCHES)

CODE	LEAD LENGTH (IN INCHES)

CODE	LEAD TYPE (NOTE 5)
1	FIBERGLASS INSULATION & JACKETED
3	CODE 1 WITH STN. STL. OVERBRAID

CODE	TERMINATION	MATING CONN. (NOTE 6)	TEMPERATURE LIMIT
A	BARE ENDS (NOTE 7)		
C	STANDARD SIZE DUPLEX PLUG	C1	390°F(200°C)
Cx	EXTENDED LIMITS DUPLEX PLUG	Cx1	660°F(320°C)
CxHD	EXT. LIMITS SOLID PIN DUPLEX PLUG	Cx1	660°F(320°C)
T3	THREE PIN DUPLEX PLUG	TT3	390°F(200°C)
LL	TWO STANDARD SIZE 2-PIN PLUGS	NN	390°F(200°C)

**TEMPERATURE MEASUREMENT DESIGNER'S GUIDE**  
[WWW.THERMO-ELECTRIC-DIRECT.COM](http://WWW.THERMO-ELECTRIC-DIRECT.COM)

## SECTION IMTC

### IMMERSION THERMOCOUPLES

with FIBERGLASS & FIBLERGLASS/STN. STL. BRAID  
 LEAD WIRE, DUPLEX CONSTRUCTION

The information contained herein shall be considered the sole property of Thermo Electric Company, Inc. The recipient thereof agrees not to disclose or reproduce said information to parties outside the recipient's organization without the written permission of Thermo Electric.

Doc. No.: TE-CO010109-IMTC-040