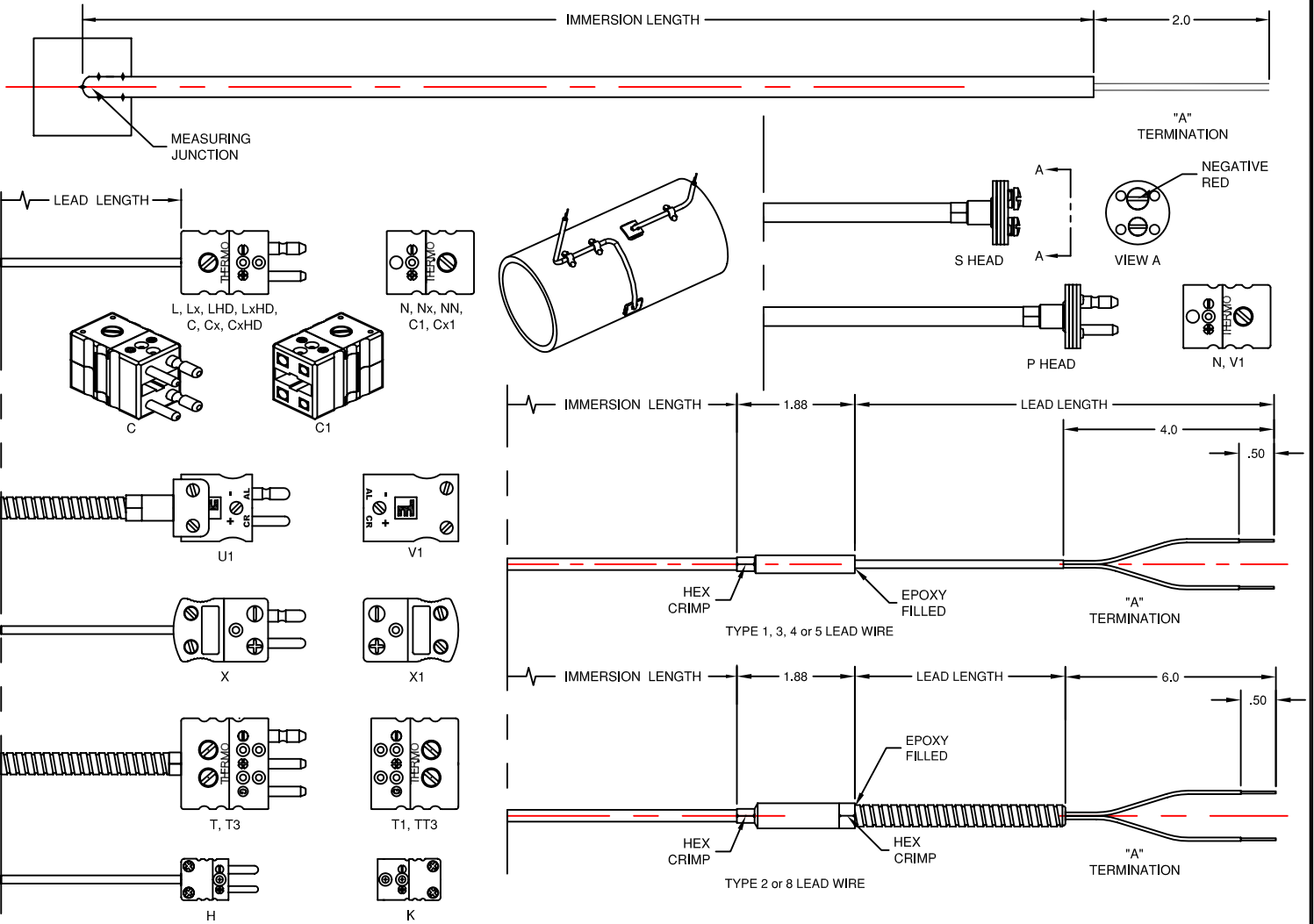


SURFACE MOUNT THERMOCOUPLES & RTD'S



CODE	CALIBRATION
J	IRON(+) vs CONSTANTAN(-)
K	CHROMEL(+) vs ALUMEL(-)
T	COPPER(+) vs CONSTANTAN(-)
E	CHROMEL(+) vs CONSTANTAN(-)
N	NICROSIL(+) vs NISIL(-)
KKS	CHROMEL(+) vs ALUMEL(-) (NOTE 2)
EES	CHROMEL(+) vs CONSTANTAN(-) (NOTE 2)

CODE	SHEATH DIAMETER		
	FRACTION	DECIMAL	METRIC
18	1/8"	.125	3.2mm
316	3/16"	.187	4.8mm
14	1/4"	.250	6.4mm

CODE	MEASURING JUNCTION
G	GROUNDED
U	UNGROUND
DG	DUPLEX GROUNDED
DU	DUPLEX UNGROUNDED

CODE	SHEATH MATERIAL	
	MATERIAL	STD. CALIBRATIONS
304	304 STN. STL.	J, K, T
316	316 STN. STL.	J, K, T, E, N
310	310 STN. STL.	J, K, E
1600	INCONEL 600	K, N, KKS(NOTE 2), EES(NOTE 2)

ORDERING CODE

J 14 G 316 -W 3 R 10 12 48 1 L N

Notes:

- (1) Meets or exceeds Special Initial Calibration Tolerances per ANSI MC96.1-1982 and ASTM E230-1993
- (2) Denotes Stabilized thermocouples.
- (3) Omit mating connector if not ordered.
- (4) Available in 1/8" diameter only or on lead wire.
- (5) Available with spade lugs, replace "A" with "LG".
- (6) Not available on lead wires.

CODE	PAD SIZE
1	3/4" BY 3/4" BY 1/8" THICK
2	1" BY 1" BY 1/8" THICK
3	1" BY 1" BY 1/16" THICK
4	1" BY 2" BY 1/8" THICK

CODE	BEND RADIUS
R	RIGHT ANGLE
L	LONGITUDINAL
FLAT	FLAT SURFACE

CODE	IMMERSION LENGTH (IN INCHES)
3	3
10	10
12	12
48	48

CODE	LEAD LENGTH (IN INCHES) OMIT IF LEAD WIRE 0
1	1
12	12
48	48

CODE	PIPE DIAMETER (IN INCHES)
14	1/4"
316	3/16"

CODE	LEAD TYPE (20 Ga. STANDARD)
0	NO LEAD WIRE
1	FIBERGLASS INSULATION & JACKETED
2	FIBERGLASS, ARMOR OVERALL
3	CODE 1 WITH STN. STL. OVERBRAID
4	PVC INSULATION & JACKETED
5	TEFLON(FEP) INSULATION & JACKETED
8	PVC INSULATION, ARMOR OVERALL

CODE	TERMINATION	MATING CONN. (NOTE 3)	
		CODE	TEMPERATURE LIMIT
A	BARE ENDS (NOTE 5)	N	390°F (200°C)
L	STANDARD SIZE PLUG	N	390°F (200°C)
LHD	STANDARD SIZE SOLID PIN PLUG	Nx	660°F (320°C)
Lx	EXTENDED LIMITS PLUG	Nx	660°F (320°C)
LxHD	EXTENDED LIMITS SOLID PIN PLUG	Nx	300°F (150°C)
U1	IMPACT RESISTANT PHENOLIC PLUG	V1	1000°F (538°C)
X	ULTRA-TEMP PLUG	X1	390°F (200°C)
H	THREE PIN PLUG	T1	390°F (200°C)
P	MINIATURE PLUG (NOTE 4)	K	390°F (200°C)
S	COOLANT HEAD (NOTE 6)	K	350°F (177°C)
C	COOLANT PLUG (NOTE 6)	N, V1	350°F (177°C)
Cx	STANDARD SIZE DUPLEX PLUG	C1	390°F (200°C)
CxHD	EXTENDED LIMITS DUPLEX PLUG	Cx1	660°F (320°C)
CxHD	EXT. LIMITS SOLID PIN DUPLEX PLUG	Cx1	660°F (320°C)
T3	THREE PIN DUPLEX PLUG	TT3	390°F (200°C)
LL	TWO STANDARD SIZE 2-PIN PLUGS	NN	390°F (200°C)

For an item that does not fall within the catalog description an (SP) can be added to the ordering code as part of a custom construction.



TEMPERATURE MEASUREMENT DESIGNER'S GUIDE
WWW.THERMO-ELECTRIC-DIRECT.COM

SECTION SUTR

TUBESKIN THERMOCOUPLES

The information contained hereon shall be considered the sole property of Thermo Electric Company, Inc. The recipient thereof agrees not to disclose or reproduce said information to parties outside the recipient organization without the written permission of Thermo Electric.

Doc. No.: TE-CO010109-SUTR-100