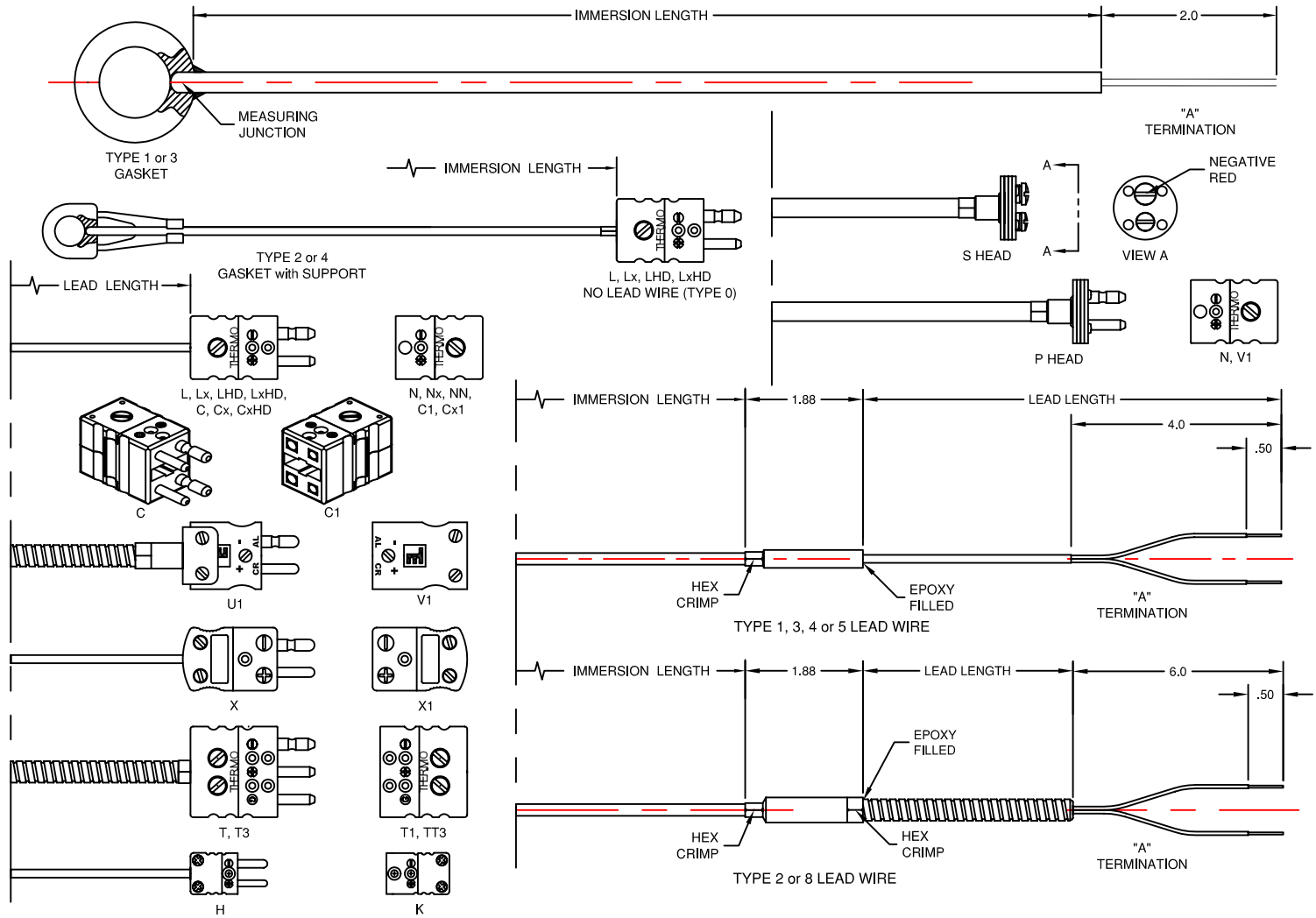


SURFACE MOUNT THERMOCOUPLES & RTD'S



CODE	CALIBRATION
J	IRON(+) vs CONSTANTAN(-)
K	CHROMEL(+) vs ALUMEL(-)
T	COPPER(+) vs CONSTANTAN(-)
E	CHROMEL(+) vs CONSTANTAN(-)
N	NICROSIL(+) vs NISIL(-)
KKS	CHROMEL(+) vs ALUMEL(-) (NOTE 2)
EES	CHROMEL(+) vs CONSTANTAN(-) (NOTE 2)

CODE	SHEATH DIAMETER		
	FRACTION	DECIMAL	METRIC
125	1/25"	.040	1.1mm
116	1/16"	.063	1.6mm
18	1/8"	.125	3.2mm
316	3/16"	.187	4.8mm
14	1/4"	.250	6.4mm

CODE	MEASURING JUNCTION
G	GROUNDING
U	UNGROUNDING
DG	DUPLEX GROUNDING
DJ	DUPLEX UNGROUNDING

CODE	SHEATH MATERIAL	
	MATERIAL	STD. CALIBRATIONS (NOTE 4)
304	304 STN. STL.	J, K, T
316	316 STN. STL.	J, K, T, E, N
310	310 STN. STL.	J, K, E
1600	INCONEL 600	K, N, KKS(NOTE 2), EES(NOTE 2)

ORDERING CODE

J 14 G 316 G 3 10 12 48 1 L N

- Notes:
- (1) Meets or exceeds Special Initial Calibration Tolerances per ANSI MC96.1-1982 and ASTM E230-1993
 - (2) KKS & EES denotes stabilized thermocouple and special tolerance.
 - (3) Omit mating connector if not ordered. Mating connector can be attached to the sheath.
 - (4) Available on sheath in 1/25", 1/16" and 1/8" diameters only.
 - (5) Available in 1/16", 1/8", 3/16" and 1/4" diameters only.
 - (6) Available with spade lugs, replace "A" with "LG".

CODE	GASKET TYPE
1	COPPER GASKET, NO SUPPORT
2	COPPER GASKET, STAINLESS STEEL SUPPORT
3	STAINLESS STEEL GASKET, NO SUPPORT
4	STAINLESS STEEL GASKET, STN. STL. SUPPORT

CODE	GASKET SIZE		
	BOLT SIZE	ID	OD
05	#6	.144"	3/8"
06	#8	3/16"	3/8"
07	#10	13/64"	3/8"
08	#12	7/32"	5/8"
10	1/4"	9/32"	5/8"
12	5/16"	11/32"	5/8"
14	3/8"	13/32"	13/16"
16	7/16"	15/32"	13/16"
18	1/2"	17/32"	13/16"
20	9/16"	19/32"	13/16"
22	5/8"	21/32"	1 3/8"
26	3/4"	13/16"	1 3/8"
30	7/8"	15/16"	1 3/8"
04	1"	1 1/16"	1 3/8"

CODE	IMMERSION LENGTH (IN INCHES)
3	3
10	10
12	12
48	48

CODE	LEAD LENGTH (IN INCHES) OMIT IF LEAD WIRE 0
1	1
10	10
12	12
48	48

CODE	LEAD TYPE (20 Ga. STANDARD)
0	NO LEAD WIRE
1	FIBERGLASS INSULATION & JACKETED
2	FIBERGLASS, ARMOR OVERALL
3	CODE 1 WITH STN. STL. OVERBRAID
4	PVC INSULATION & JACKETED
5	TEFLON(FEP) INSULATION & JACKETED
8	PVC INSULATION, ARMOR OVERALL

CODE	TERMINATION	MATING CONN. (NOTE 3)	
		CODE	TEMPERATURE LIMIT
A	BARE ENDS (NOTE 6)	N	390°F(200°C)
L	STANDARD SIZE PLUG	N	390°F(200°C)
LHD	STANDARD SIZE SOLID PIN PLUG	Nx	660°F(320°C)
Lx	EXTENDED LIMITS PLUG	Nx	660°F(320°C)
LxHD	EXTENDED LIMITS SOLID PIN PLUG	V1	300°F(150°C)
U1	IMPACT RESISTANT PHENOLIC PLUG	X1	1000°F(538°C)
X	ULTRA-TEMP PLUG	T1	390°F(200°C)
T	THREE PIN PLUG	K	390°F(200°C)
H	MINIATURE PLUG (NOTE 4)	N	350°F(177°C)
S	COOLANT HEAD (NOTE 5)	N, V1	350°F(177°C)
P	COOLANT PLUG (NOTE 5)	N, V1	350°F(177°C)
C	STANDARD SIZE DUPLEX PLUG	C1	390°F(200°C)
Cx	EXTENDED LIMITS DUPLEX PLUG	Cx1	660°F(320°C)
CxHD	EXT. LIMITS SOLID PIN DUPLEX PLUG	Cx1	660°F(320°C)
T3	THREE PIN DUPLEX PLUG	TT3	390°F(200°C)
LL	TWO STANDARD SIZE 2-PIN PLUGS	NN	390°F(200°C)

For an item that does not fall within the catalog description an (SP) can be added to the ordering code as part of a custom construction.



THERMO ELECTRIC

TEMPERATURE MEASUREMENT DESIGNER'S GUIDE
WWW.THERMO-ELECTRIC-DIRECT.COM

SECTION SUTR

HIGH TEMPERATURE GASKET THERMOCOUPLES

The information contained herein shall be considered the sole property of Thermo Electric Company, Inc. The recipient thereof agrees not to disclose or reproduce said information without the written permission of Thermo Electric.

Doc. No.: TE-CO010109-SUTR-020