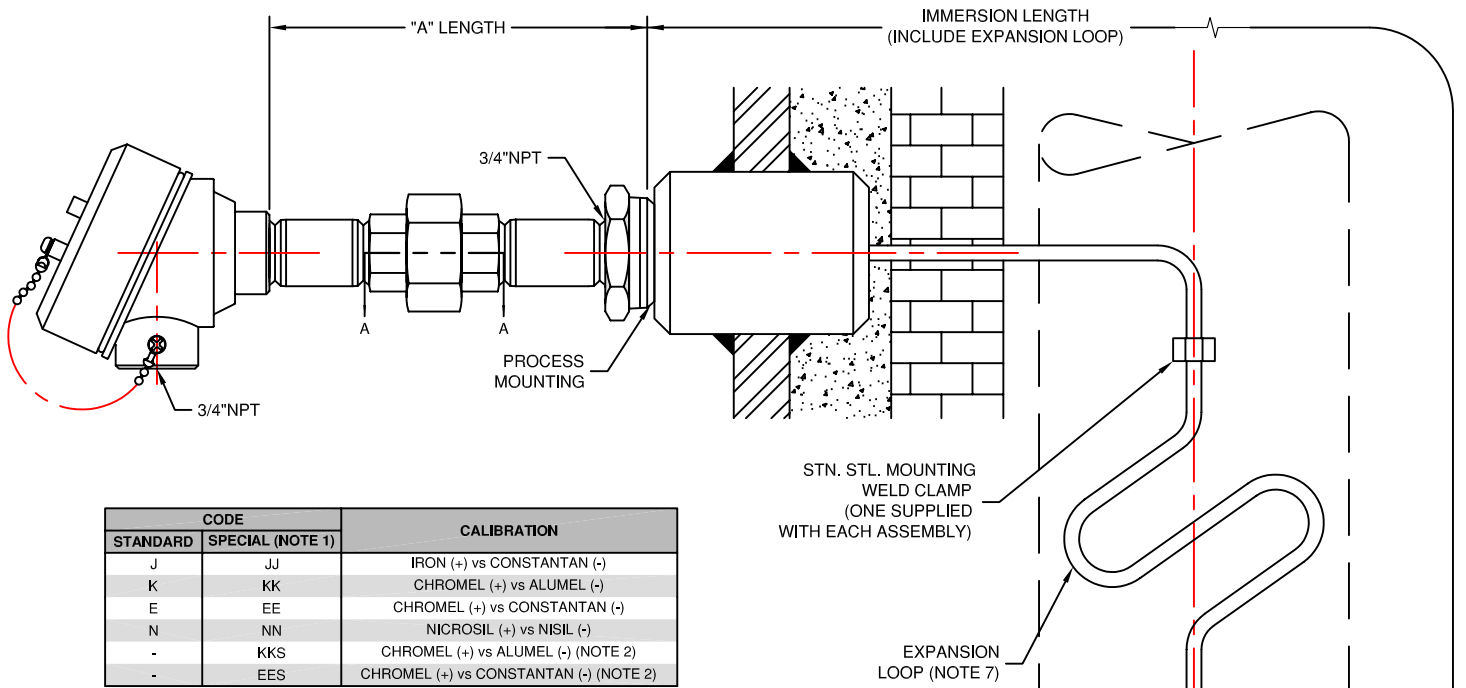


INDUSTRIAL THERMOCOUPLES



CODE		CALIBRATION
STANDARD	SPECIAL (NOTE 1)	
J	JJ	IRON (+) vs CONSTANTAN (-)
K	KK	CHROMEL (+) vs ALUMEL (-)
E	EE	CHROMEL (+) vs CONSTANTAN (-)
N	NN	NICROSIL (+) vs NISIL (-)
-	KKS	CHROMEL (+) vs ALUMEL (-) (NOTE 2)
-	EES	CHROMEL (+) vs CONSTANTAN (-) (NOTE 2)

CODE	SHEATH DIAMETER		
	FRACTION	DECIMAL	METRIC
316	3/16"	.187	4.8mm
14	1/4"	.250	6.4mm
38	3/8"	.375	9.5mm

MOUNTING CLAMPS (310 SS)	
CODE	SHEATH DIAMETER
CL6524-5-3	3/16" (.188)
CL6524-2-3	1/4" (.25)
CL6524-3-3	3/8" (.375)

CODE		MEASURING JUNCTION
G		
U		SINGLE UNGROUNDED, ISOLATED FROM SHEATH
DG		DUPLEX GROUNDED, GROUNDED TO SHEATH
DU		DUPLEX UNGROUNDED, ISOLATED FROM SHEATH

CODE	ELEMENT SHEATH MATERIAL	STANDARD CALIBRATIONS (NOTE 3)
P	304 STN. STL.	J, K, T
R	316 STN. STL.	J, K, T, E, N
Q	310 STN. STL.	J, K, E
J	INCONEL 600	K, N, KKS, EES (NOTE 2)

CODE	IMMERSION LENGTH
	(IN INCHES)

CODE	BEND RADIUS
R	RIGHT ANGLE
L	LONGITUDINAL
FLAT	FLAT SURFACE

- Notes:
- (1) Meets or exceeds Special Initial Calibration Tolerances per ANSI MC96.1-1982 and ASTM E230-1993.
 - (2) KKS & EES denotes stabilized thermocouple and special tolerance.
 - (3) Contact factory for other calibration and sheath combinations.
 - (4) Rated NEC class 1, Groups B, C and D.
 - (5) ATEX approved EEx d IIC, T6.
 - (6) For an item that does not fall within the catalog description an (SP) can be added to the ordering code as part of a custom construction.
 - (7) Tube skins are normally shipped straight or coiled. Expansion loops or coils are available formed at factory to specification.

TSC-2 - [] - [] - [] - [] - [] - [] - [] - [] - []
 K - 14 - G - R - 60 - L 12 - 6 - AN - 1NPT

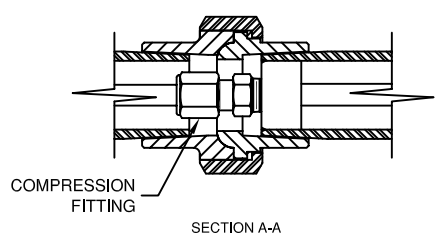
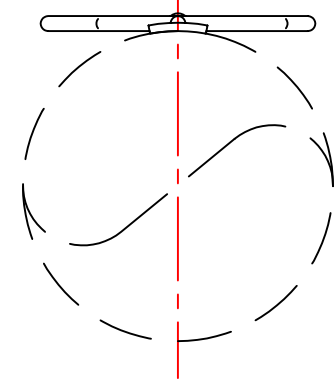
CODE	PIPE DIAMETER
	(IN INCHES)

CODE	"A" LENGTH
	(IN INCHES)

CODE	PROCESS MOUNTING
3/4NPT	3/4"NPT (NO REDUCER)
1NPT	1"NPT
1 1/2NPT	1 1/2"NPT
2NPT	2"NPT

CODE	CONNECTION HEAD		NEMA
	MATERIAL	TYPE	
AN	ALUMINUM	WATER PROOF	4
SN	STAINLESS STEEL	WATER PROOF, CORROSION RESISTANT	4, 4X
AE	ALUMINUM	EXPLOSION PROOF (NOTE 4)	4
SE	STAINLESS STEEL	EXPLOSION PROOF, CORROSION RESISTANT (NOTE 4)	4, 4X
XD	ALUMINUM	EXPLOSION PROOF, FM, CSA APPROVED (NOTES 4 & 5)	4, 4X
A	CAST IRON	WEATHER PROOF, RUGGED	
AX	ALUMINUM, LARGE DEVICE, EPOXY COATED	EXPLOSION PROOF, ATEX APPROVED (NOTE 5)	4

LONGITUDINAL MOUNT SHOWN



- Specifications
- (1) Union Material - Standard Black Malleable Iron.
 - (2) Nipple Material - Standard Carbon Steel.
 - (3) Weld pad of same material as sheath unless specified otherwise.
 - (4) Pad size, 1" by 1" by .13" thk.



TEMPERATURE MEASUREMENT DESIGNER'S GUIDE
 WWW.THERMO-ELECTRIC-DIRECT.COM

SECTION INTC TUBE SKIN THERMOCOUPLES TYPE TSC-2

The information contained hereon shall be considered the sole property of Thermo Electric Company, Inc. The recipient thereof agrees not to disclose or reproduce said information to parties outside the recipient's organization without the written permission of Thermo Electric.

Doc. No.: TE-CO010109-INTC-290