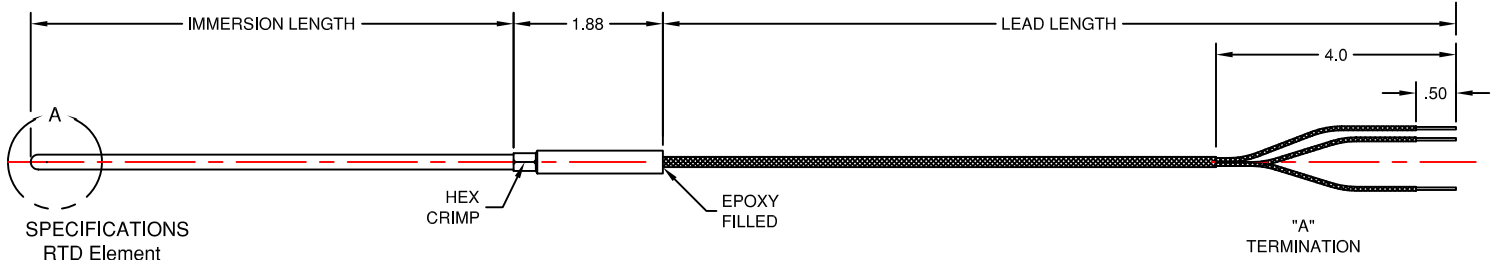


# IMMERSION RTD'S

TEMPERATURE RANGE: -292°F to 1202°F (-180°C to 650°C)

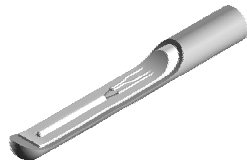


## SPECIFICATIONS

**RTD Element**  
 Type: Platinum, Wire Wound  
 Resistance @ 0° C: 100 OHMS  
 Temperature Coefficient of Resistance: .00385  
 Sheath Material: Inconel 600  
 Insulation: Hard Packed MgO

## Lead Wire

Conductor Size: 24 Gauge Stranded  
 Conductor Material: Nickel Plated Copper



DETAIL A

## Connectors

Body Material: Thermoplastic  
 Polarized Pins  
 Spring Loaded Inserts  
 Maximum Temperature Limit: 390°F (200°C)

## ORDERING CODE

| CODE | SHEATH DIAMETER | AVAILABILITY (W=WIRES, T=TOTAL) |    |    |        |        |        |
|------|-----------------|---------------------------------|----|----|--------|--------|--------|
|      |                 | SINGLE                          |    |    | DUPLEX |        |        |
|      |                 | 2W                              | 3W | 4W | 2W(4T) | 3W(6T) | 4W(8T) |
| 18   | 1/8" (3.2mm)    |                                 |    |    |        |        |        |
| 316  | 3/16" (4.8mm)   | •                               | •  | •  | •      |        |        |
| 14   | 1/4" (6.4mm)    | •                               | •  | •  |        |        |        |

| CODE | IMMERSION LENGTH<br>IN INCHES |
|------|-------------------------------|
| 14   | 12                            |
| 36   | 36                            |

| CODE | LEAD LENGTH<br>(IN INCHES) |
|------|----------------------------|
| 1    | 12                         |
| 2    | 24                         |
| 3    | 36                         |
| 4    | 48                         |
| 5    | 60                         |

| CODE | SYSTEM  |
|------|---|
| 2W   | 2 WIRE (4 DUPLEX)                             |
| 4W   | 3 WIRE (LEAVE BLANK)*<br>4 WIRE (SINGLE ONLY) |

\*Single or Duplex

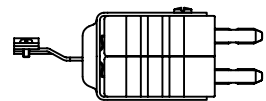
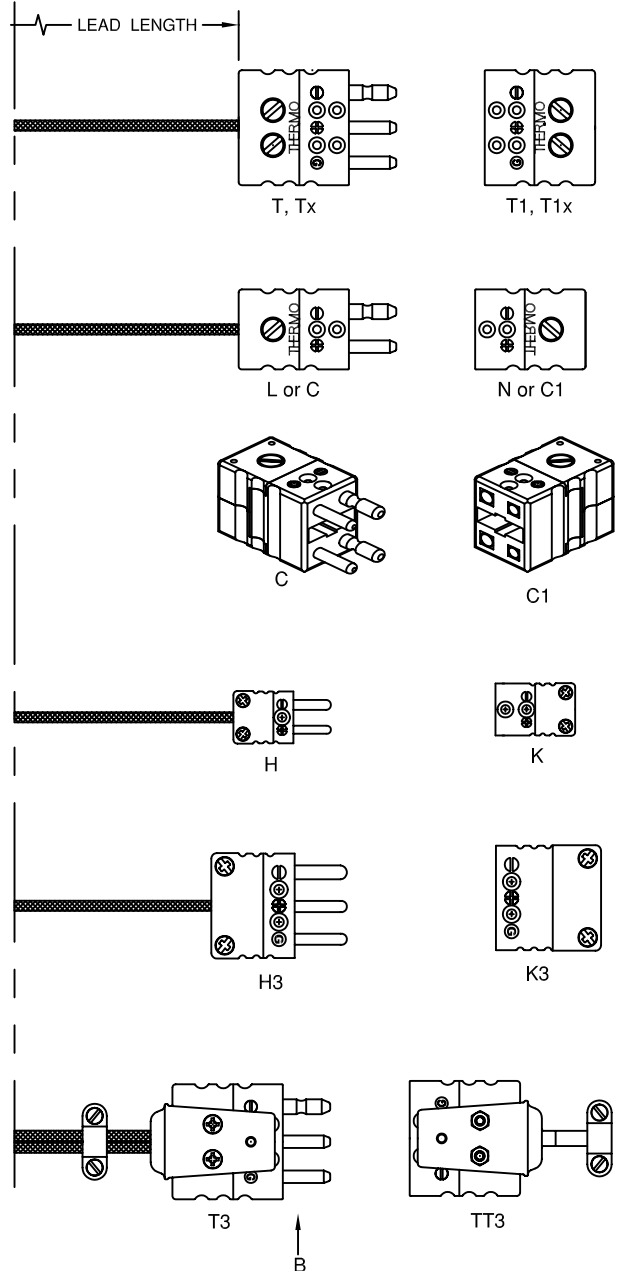
RTD - 14 - HT - 12 - 36 - 1 - A

| CODE | STRUCTURE            |
|------|----------------------|
| D    | SINGLE (LEAVE BLANK) |
|      | DUPLEX               |

| CODE | LEAD WIRE INSULATION |
|------|----------------------|
| 1    | FIBERGLASS           |
| 5    | TEFLON               |

| CODE | TERMINATION                |
|------|----------------------------|
| A    | BARE ENDS (NOTE 1)         |
| T    | STANDARD SIZE 3 PIN PLUG   |
| Tx   | EXTENDED LIMITS 3 PIN PLUG |
| L    | STANDARD SIZE 2 PIN PLUG   |
| C    | STANDARD SIZE 4 PIN PLUG   |
| H    | MINIATURE 2 PIN PLUG       |
| H3   | MINIATURE 3 PIN PLUG       |
| T3   | STANDARD SIZE 6 PIN PLUG   |

| CODE | MATING CONNECTOR<br>(OMIT IF NOT ORDERED) |
|------|---|
| T1   | STANDARD SIZE 3 PIN JACK                  |
| T1x  | EXTENDED LIMITS 3 PIN JACK                |
| N    | STANDARD SIZE 2 PIN JACK                  |
| C1   | STANDARD SIZE 4 PIN JACK                  |
| K    | MINIATURE 2 PIN JACK                      |
| K3   | MINIATURE 3 PIN JACK                      |
| TT3  | STANDARD SIZE 6 PIN JACK                  |



VIEW B

- Notes:
- (1) Available with spade lugs, replace "A" with "LG".
  - (2) Sheath may be bent to up to a diameter of twice the radius from 2" past tip on single and 3" on duplex.
  - (3) Type "HT" not available in Class A accuracy.
  - (4) For an item that does not fall within the catalog description an (SP) can be added to the ordering code as part of a custom construction.



TEMPERATURE MEASUREMENT DESIGNER'S GUIDE  
 WWW.THERMO-ELECTRIC-DIRECT.COM

## SECTION IMRD

TYPE "HT"  
 IMMERSION RTD'S with LEAD WIRE  
 SINGLE & DUPLEX CONSTRUCTION

The information contained hereon shall be considered the sole property of Thermo Electric Company, Inc. The recipient thereof agrees not to disclose or reproduce said information to parties outside the recipient's organization without the written permission of Thermo Electric.

Doc. No.: TE-CO010109-IMRD-080